



**FOUR SEASONS**  
HOTEL  
LONDON AT TEN TRINITY SQUARE

MEETINGS AND EVENTS  
IN A LANDMARK OF  
POWER AND PRESTIGE

## THE CITY OF LONDON'S MOST PRESTIGIOUS LOCATION WITHIN STEPS OF THE TOWER OF LONDON, TOWER BRIDGE AND THE RIVER THAMES

Four Seasons Hotel London at Ten Trinity Square celebrates its place within the capital's rich history and culture, yet feels fully connected to the future. First opened in 1922, this Grade II\*-listed building is the former headquarters of the Port of London Authority. Original neo-classical interiors have been exquisitely restored, creating a seamless fusion with chic, modern design.

With approximately 1,626 m<sup>2</sup> (17,498 sq. ft.) of space for business meetings and special events, Four Seasons offers two ballrooms and three smaller function rooms, conveniently grouped on the first and second floors, as well as two spectacular new Penthouses on the seventh floor. Events can welcome up to 200 guests for receptions and 150 for seated dinners.





## UN BALLROOM

The setting for the inaugural reception of the United Nations General Assembly in 1946, the UN Ballroom is a beautifully restored venue, enhancing every event with a rich sense of history. With eight-metre (26.2 ft.) ceilings, the room features Corinthian columns, walnut panelling and two magnificent crystal chandeliers. Large windows look out over the front entrance to the Tower of London, Tower Bridge and the River Thames.

## MERCHANTS HALL

A one-of-a-kind circular ballroom, the Merchants Hall glows with natural light from its circumference of windows. Light oak panelling and antique mirrors add a sense of traditional warmth to this contemporary design. The venue is located in the heart of the building, sitting within the central courtyard.





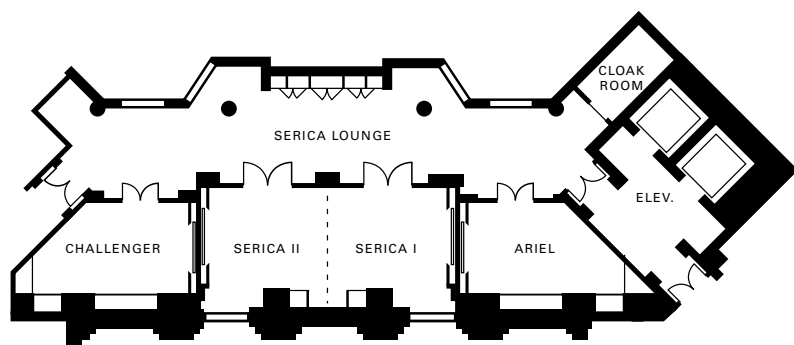
## THAMES PENTHOUSE

A 6,000-sq.-ft. venue with uninterrupted views over the most iconic architecture of London, the Thames Penthouse offers an incomparable setting in the city. The residential – style penthouse consists of a large entertaining space with floor to ceiling windows, a bespoke bar, open plan seating/living area and kitchen. A 1,500-sq.-ft. terrace overlooking the Tower of London and Tower Bridge makes this space even more unique.



## CITY PENTHOUSE

A bright, contemporary venue, the 3,000-sq.-ft. City Penthouse is perfect for intimate meetings and events. The main entertaining space benefits from large windows overlooking the hotel atrium providing plenty of natural daylight and a connecting room offers the perfect break-out area for breakfast or lunch.

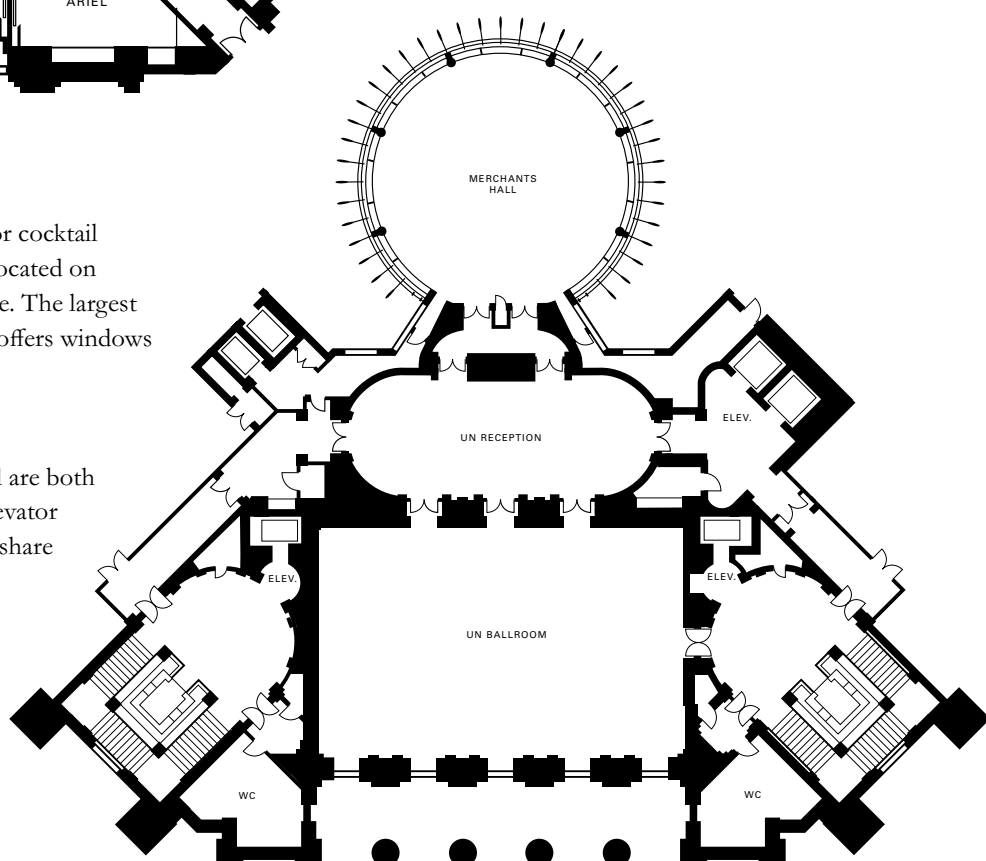


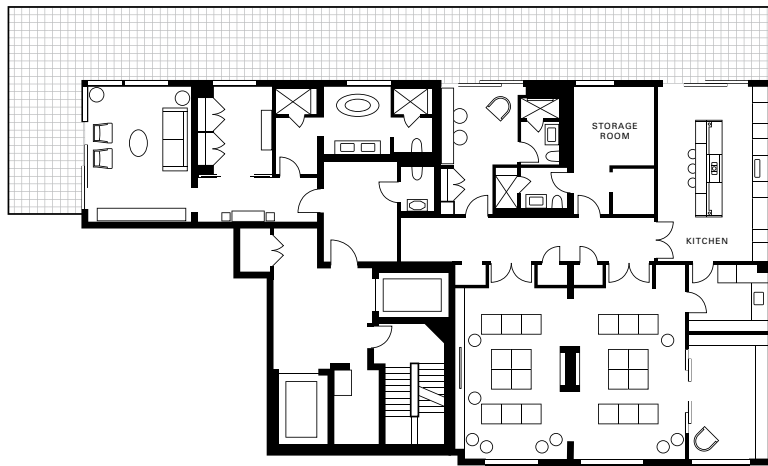
## FIRST FLOOR

Ideal for board meetings, private dinners or cocktail receptions, our three function rooms are located on the first floor, just above the front entrance. The largest of the three rooms is divisible in two and offers windows overlooking the lobby below.

## SECOND FLOOR

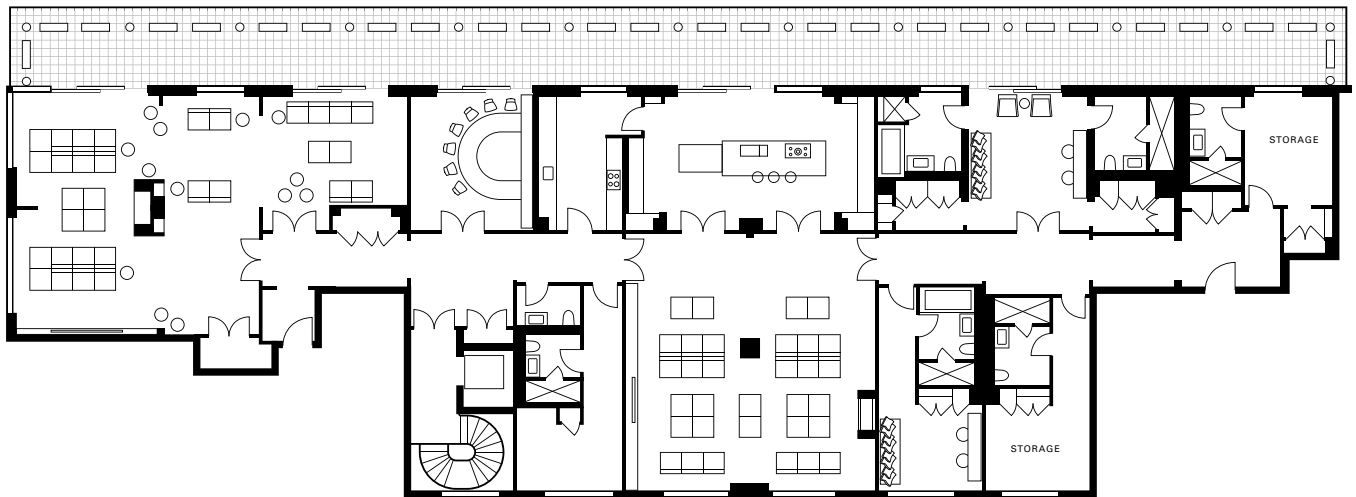
The UN Ballroom and the Merchants Hall are both located on the second floor, reached by elevator or the grand staircase. The two ballrooms share an elegant pre-function area.





## SEVENTH FLOOR

The Thames Penthouse and The City Penthouse are unique events spaces, perfect for corporate events or social gatherings. London's leading interior designer David Linley has transformed the residential-style venues with elegant and refined interiors. Offering panoramic views of the most iconic and historical architecture in the City of London from its extensive terrace, The Thames Penthouse is incomparable in the City of London.



### CAPACITIES

Rooms	Dimensions width x length (m)	m <sup>2</sup>	sq. ft.	Height (m)	Reception	Banquet	Theatre	Classroom	Boardroom	Hollow Square	U-Shape	Cabaret
<b>First Floor</b>												
Ariel	4 x 3.2 x 5.8 x 3.2	25	269	2.8	-	-	-	-	7	-	-	-
Serica I & II	9 x 4	36	387	2.8	-	-	-	-	14	-	-	-
Serica I	4.5 x 4	18	193	2.8	-	-	-	-	6	-	-	-
Serica II	4.5 x 4	18	193	2.8	-	-	-	-	6	-	-	-
Challenger	4 x 3.2 x 5.8 x 3.2	25	269	2.8	-	-	-	-	7	-	-	-
The Gallery	18 x 4	72	775	3.90	40	-	-	-	-	-	-	-
<b>Second Floor</b>												
UN Ballroom	18.5 x 11	203	2,185	8	200	150	245	100	48	56	57	96
Merchants Hall	Diameter = 13.1 (Circumference 41.5)	138	1,485	3.5	70	70	100	52	24	32	24	48
UN Reception	16 x 6	96	1,033	3.3	70	-	-	-	-	-	-	-
<b>Seventh Floor</b>												
Thames Penthouse												
Tower View	-	613	6,599	-	80	-	16	-	18	-	-	-
Garden View	-	613	6,599	-	80	-	on request	-	20	-	-	-
City Penthouse	-	283	3,042	-	40	-	-	-	14	-	-	-



## LOCATION

- One of London's most remarkably central locations – midway between West End shopping and theatre and the second financial district at Canary Wharf
- On the southeast corner of the City of London – a 10-minute walk to the Bank of England
- Within steps of the Tower of London, Tower Bridge and the River Thames
- Two-minute walk to the London Underground station at Tower Hill, connecting on the District and Circle Lines
- 20 minutes to London City Airport, 70 minutes to Heathrow, and 80 minutes to Gatwick

## ACCOMMODATIONS

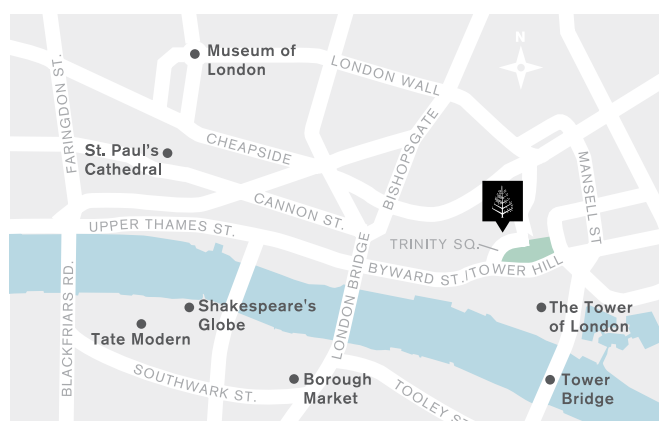
- 134 accommodations, including 11 spacious suites and a selection of luxury residences – located on the ground to sixth floor
- Exquisitely restored neo-classical interiors, infused with chic, modern design

## DINING

- Michelin starred La Dame de Pic London is the first UK restaurant by Chef Anne-Sophie Pic, serving innovative French cuisine in a warm and elegant environment
- Sleek Asian restaurant Mei Ume offers authentic Chinese and Japanese dishes from Head Chef Tony Truong
- Rotunda Bar and Lounge is the perfect location for breakfast, light dishes throughout the day or after-work cocktails
- 24-hour In-Room Dining

## SPA & FITNESS

- The City of London's most lavish spa sanctuary, encompassing 1,600 m<sup>2</sup> (17,222 sq. ft.)
- Eight spacious spa treatment rooms, including an ultra-luxurious spa suite for couples and a Hammam Suite for steam treatments
- State-of-the-art fitness centre
- 14-metre (46-foot) pool, vitality pool, sauna and steam rooms
- Finishing Touches nail salon for manicure and pedicures



Four Seasons Hotel London at Ten Trinity Square  
 10 Trinity Square, EC3N 4AJ London, England  
 Main Tel. 44 (20) 3297 9200  
 Sales Tel. 44 (20) 7319 5372  
**[sales.tentrinity@fourseasons.com](mailto:sales.tentrinity@fourseasons.com)**  
**[reservations.tri@fourseasons.com](mailto:reservations.tri@fourseasons.com)**

## CONNECT WITH US

**[fourseasons.com/tentrinity](https://www.fourseasons.com/tentrinity)**

