



FOUR SEASONS

RESORT

ORLANDO AT WALT DISNEY WORLD® RESORT

FALL IN  
*LOVE* WITH  
OUR SUITES

[EXPLORE OUR PORTFOLIO >](#)





# A DREAM COME *TRUE*

Welcome to our award-winning, AAA Five Diamond Resort in Orlando. Set in a secluded gated community within WALT DISNEY WORLD® Resort, Four Seasons Resort Orlando is a 17-story landmark framed by 26 acres (10.5 hectares) of gardens, pools, lakes, and lush Florida woodlands – part of the prestigious Golden Oak residential neighborhood.

Our collection of 443 accommodations includes 68 suites, each featuring connecting options, from two-bedroom suites up a nine-bedroom Royal Suite. It's even possible to take over the entire top floor and host up to 50 friends and family members.

All of our guest rooms and many suites have recently been redesigned, bringing a fresh, neutral décor that creates a calming place to rest and recharge after an exciting day splashing around our five-acre water park or exploring the nearby Disney Parks. With heartfelt Four Seasons service and our huge range of amenities, we are dedicated to creating your dream experience of Orlando.

*Thomas*

Thomas Steinhauer,

Regional Vice President and General Manager,  
Four Seasons Resort Orlando At Walt Disney World® Resort





## *GUEST ROOMS*

With a choice of four different views, including dazzling fireworks from MAGIC KINGDOM Park, our guest rooms feature spacious residential comfort, enhanced by a luxurious white marble bathroom and a large furnished terrace. Giving flexibility for larger families, many of our guest rooms may be combined with connecting rooms.

IDEAL FOR 2 ADULTS AND 2 CHILDREN

[VIEW DETAILS & FLOORPLAN >](#)





# GUEST ROOMS

## LOCATION

2nd to 16th floors

## VIEWS

Choice of Golden Oak View, Lake View, and Park View

## SIZE

500 sq. ft. (46 m2)

## CONNECTING ROOMS

Available with numerous connection options; most Park View Rooms are outer-connecting

## BEDS

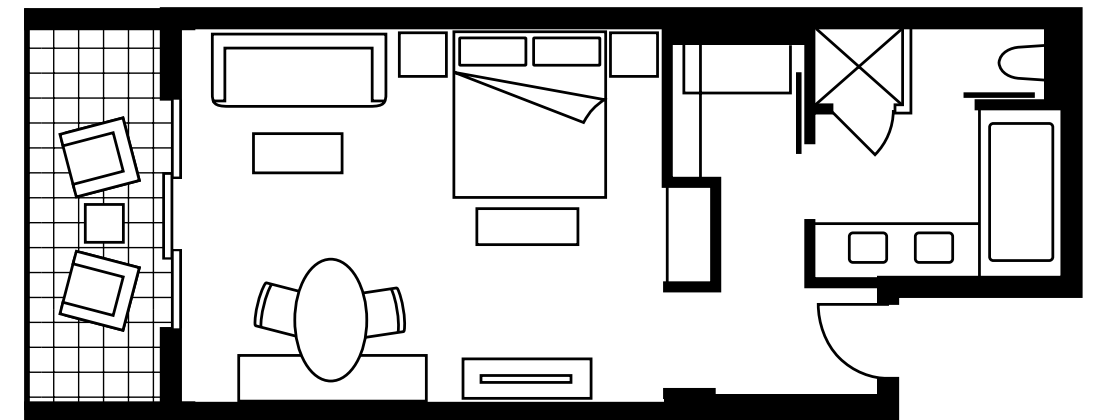
- One king bed or two queen beds
- King-bedded rooms with one queen-size sofa bed

## BATHROOM

One white marble bathroom, including two sinks, vanity mirror with TV, walk-in shower, and soaking tub

## UNIQUE FEATURES

- Desk/dining table for two
- Residential-style walk-in closet
- Furnished balcony





[WELCOME](#)

[GUEST ROOMS](#)

[SUITES](#)

[SPECIALTY SUITES](#)

[AMENITIES](#)

[CONTACT](#)

[Golden Oak View](#)

[Lake View Deluxe](#)

[Park View](#)

[Park View Deluxe](#)

[Grand Suite](#)

[Presidential Suite](#)

[Royal Suite](#)

[Buyouts](#)

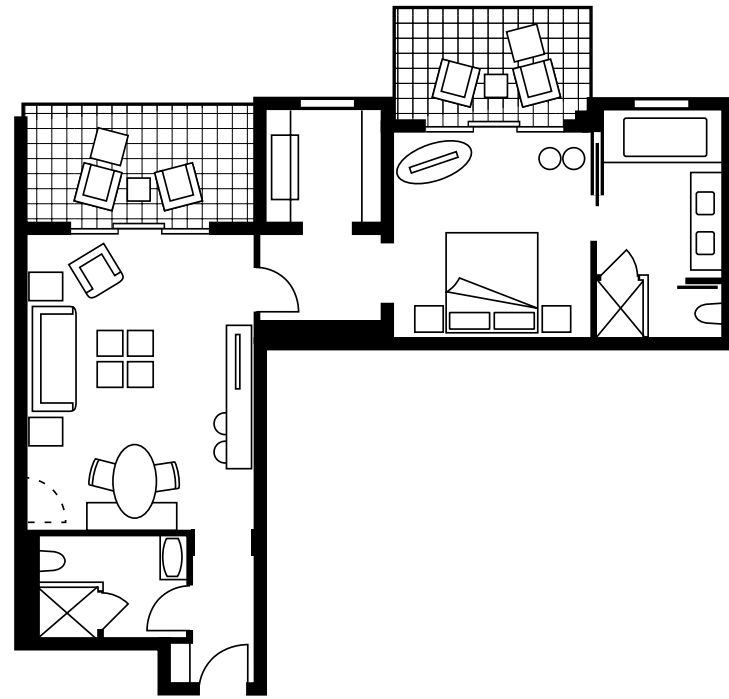


## GOLDEN OAK VIEW SUITE

With a unique L-shaped design, this suite keeps the living and bedroom areas well separated to ensure maximum quiet and privacy. For anyone sleeping on the sofa in the living room, the secondary bathroom with shower is especially convenient. Two balconies overlook the tree-lined streets and mansions of our exclusive Golden Oak neighborhood. Also available with two or three bedrooms.

IDEAL FOR 2 ADULTS AND 2 CHILDREN

[VIEW DETAILS & FLOORPLAN >](#)



#### SUITE DETAILS

## GOLDEN OAK VIEW SUITE

#### LOCATION

3rd to 15th floors

#### VIEWS

Golden Oak residential neighborhood

#### SIZE

825 sq. ft. (77 m2)

#### UNIQUE FEATURES

- Living and sleeping areas well separated for quiet and privacy
- Residential-style walk-in closet with window
- Dining table/desk for two
- Two furnished balconies

#### BEDS

One king bed, plus one queen-size sofa; one crib on request

#### BATHROOMS

- One oversized white marble bathroom, including two sinks, vanity mirror with TV, private water closet, walk-in shower, and deep-soaking tub
- One full bathroom with standing shower

#### CONNECTING ROOMS

Available as a two bedroom suite by adding a guestroom with two queen beds. Expand to a three bedroom suite with the inclusion of an additional King guest room.

[DOWNLOAD SUITE FACT SHEET >](#)





[WELCOME](#)

[GUEST ROOMS](#)

[SUITES](#)

[SPECIALTY SUITES](#)

[AMENITIES](#)

[CONTACT](#)

[Golden Oak View](#)

[Lake View Deluxe](#)

[Park View](#)

[Park View Deluxe](#)

[Grand Suite](#)

[Presidential Suite](#)

[Royal Suite](#)

[Buyouts](#)



## LAKE VIEW DELUXE SUITE

Exceptionally flexible for friends or family, this larger one-bedroom layout offers the rare suite choice of one king bed or two queen beds, in addition to a sofa bed. Relax and entertain in the spacious living room, complete with a dining table for four. The expansive furnished balcony offers serene lakeside views – beautiful in the morning when sipping coffee. Also available with two bedrooms.

IDEAL FOR 2 ADULTS AND 2 CHILDREN

[VIEW DETAILS & FLOORPLAN >](#)



[WELCOME](#)

[GUEST ROOMS](#)

[SUITES](#)

[SPECIALTY SUITES](#)

[AMENITIES](#)

[CONTACT](#)

[Golden Oak View](#)

[Lake View Deluxe](#)

[Park View](#)

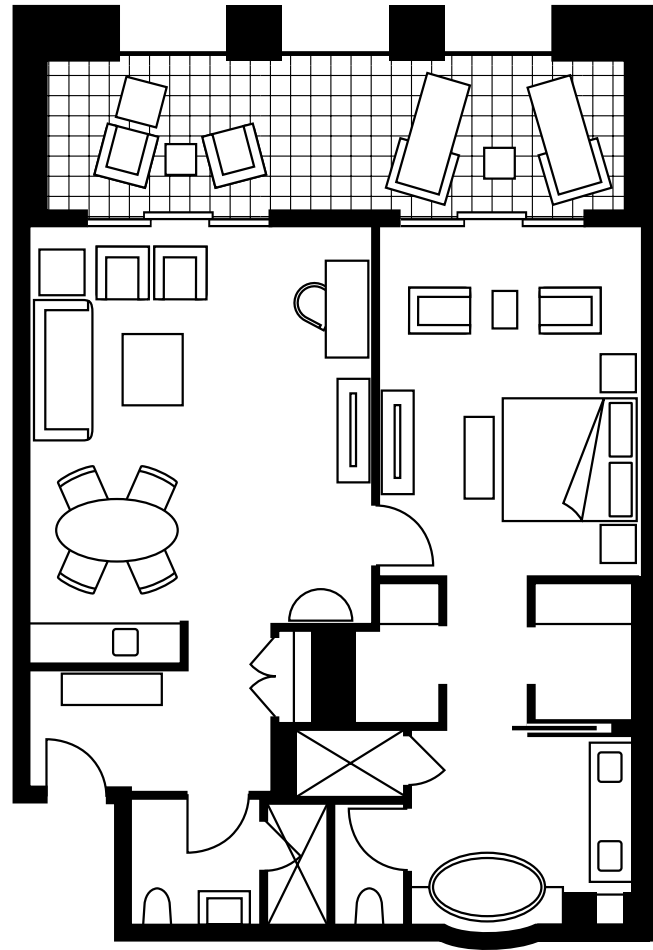
[Park View Deluxe](#)

[Grand Suite](#)

[Presidential Suite](#)

[Royal Suite](#)

[Buyouts](#)



**SUITE DETAILS**

# LAKE VIEW DELUXE SUITE

**LOCATION**

4th and 5th floors

**VIEWS**

Resort's Pools, lakes, woodlands

**SIZE**

1,000 sq. ft. (93 m<sup>2</sup>)

**UNIQUE FEATURES**

- Formal foyer with coat closet
- Dining table for four
- Desk by the window
- Sitting area in the bedroom
- Two residential-style walk-in closets
- Extra-wide furnished balcony

**BEDS**

One king bed or two queen beds, plus one queen-size sofa bed

**BATHROOMS**

- One oversized white marble bathroom, including two sinks, vanity mirror with TV, private water closet, walk-in shower, and free-standing oval tub
- One full bathroom with standing shower

**CONNECTING ROOMS**

Available as a two bedroom suite by adding a guestroom with either a King Bed or two queen beds.

[DOWNLOAD SUITE FACT SHEET >](#)







[WELCOME](#)

[GUEST ROOMS](#)

[SUITES](#)

[SPECIALTY SUITES](#)

[AMENITIES](#)

[CONTACT](#)

[Golden Oak View](#)

[Lake View Deluxe](#)

[Park View](#)

[Park View Deluxe](#)

[Grand Suite](#)

[Presidential Suite](#)

[Royal Suite](#)

[Buyouts](#)



## PARK VIEW SUITE

Your double terrace balcony is the perfect place for viewing the nightly WALT DISNEY WORLD® fireworks spectacles, as well as the Resort's pools, lakes and woodlands. This smartly designed one-bedroom suite features a spacious living area and two bathrooms – providing the ultimate home away from home in Orlando. Also available with two or three bedrooms.

IDEAL FOR 2 ADULTS AND 2 CHILDREN

[VIEW DETAILS & FLOORPLAN >](#)



[WELCOME](#)

[GUEST ROOMS](#)

[SUITES](#)

[SPECIALTY SUITES](#)

[AMENITIES](#)

[CONTACT](#)

[Golden Oak View](#)

[Lake View Deluxe](#)

[Park View](#)

[Park View Deluxe](#)

[Grand Suite](#)

[Presidential Suite](#)

[Royal Suite](#)

[Buyouts](#)



**SUITE DETAILS**

# PARK VIEW SUITE

**LOCATION**

6th to 15th floors

**VIEWS**

Resort's pools, lakes, woodlands, golf course and WALT DISNEY WORLD® fireworks

**SIZE**

825 sq. ft. (77 m2)

**UNIQUE FEATURES**

- Desk/dining table for two
- Sitting area and two closets in the bedroom
- Extra-wide furnished balcony

**BEDS**

One king bed, plus one queen-size sofa bed

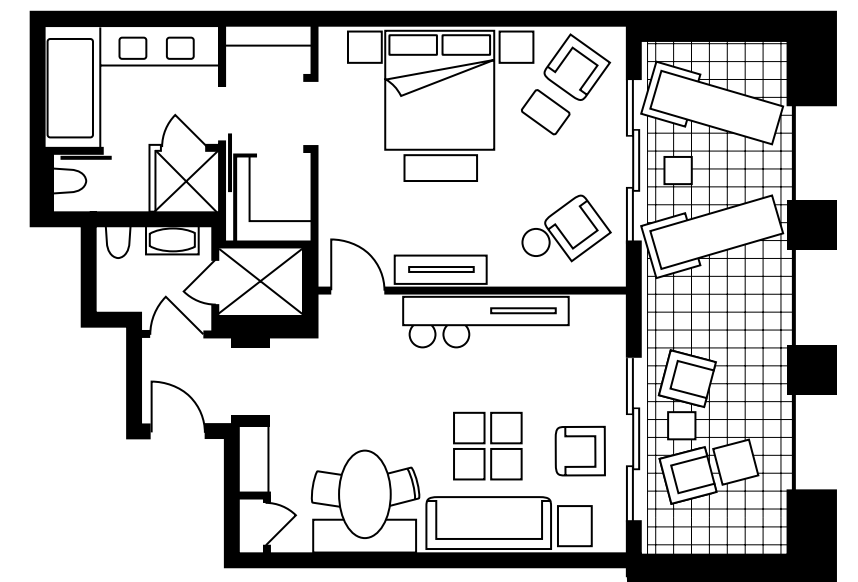
**BATHROOMS**

- One oversized white marble bathroom, including two sinks, vanity mirror with TV, private water closet, walk-in shower, and deep-soaking tub
- One full bathroom with standing shower

**CONNECTING ROOMS**

Available as a two bedroom suite by adding a guestroom with a King bed. Expand to a three bedroom suite with the inclusion of an additional guestroom that includes two queen beds.

[DOWNLOAD SUITE FACT SHEET >](#)





[WELCOME](#)

[GUEST ROOMS](#)

[SUITES](#)

[SPECIALTY SUITES](#)

[AMENITIES](#)

[CONTACT](#)

[Golden Oak View](#)

[Lake View Deluxe](#)

[Park View](#)

[Park View Deluxe](#)

[Grand Suite](#)

[Presidential Suite](#)

[Royal Suite](#)

[Buyouts](#)

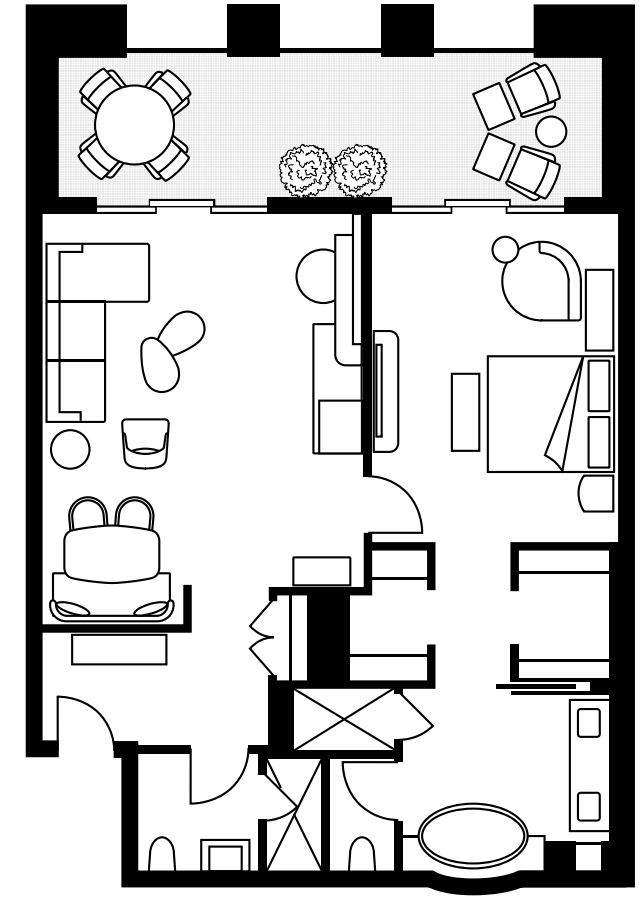
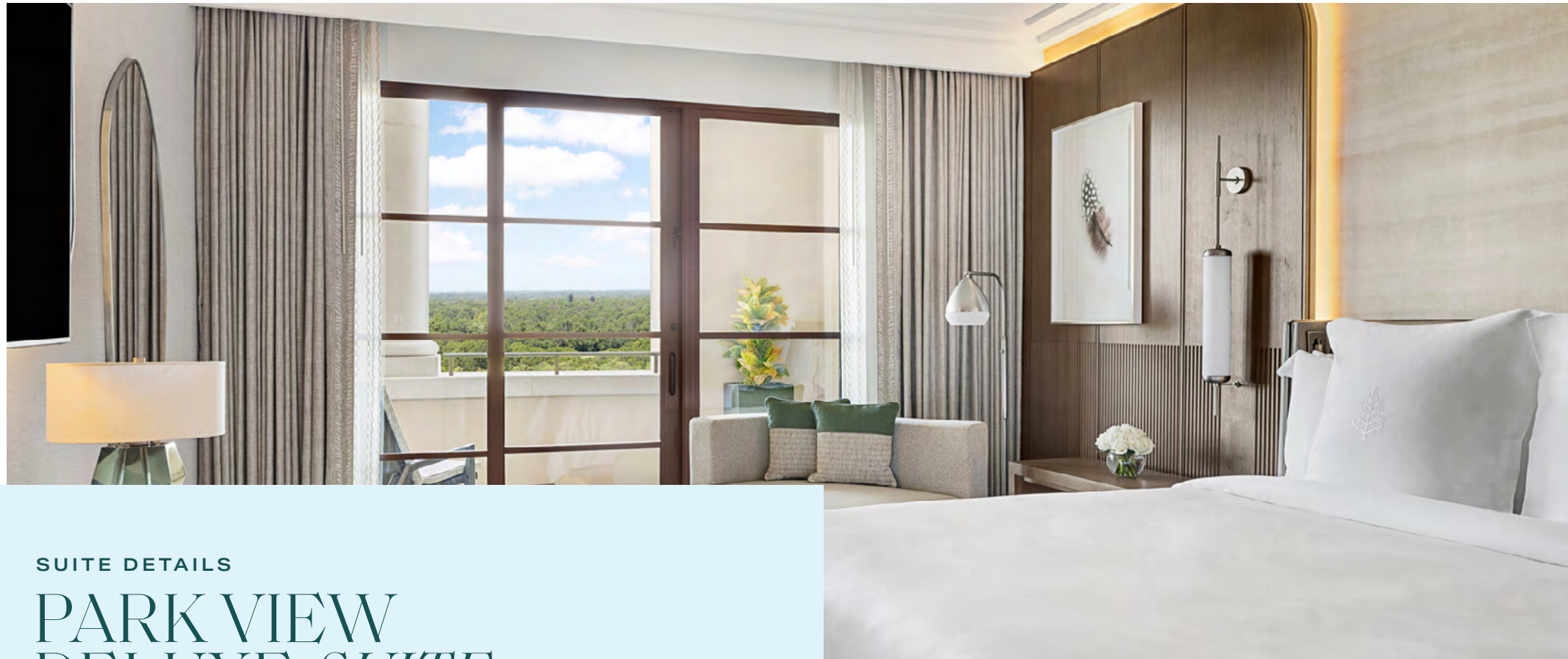


## PARK VIEW DELUXE SUITE

More spacious than our Park View Suite, this residential-style layout offers a comfortable sanctuary to share with friends or family. Enjoy separate living and sleeping areas, indoor and outdoor dining areas for four, and a large furnished terrace. Views encompass the Resort's pools, lakes and woodlands, as well as the nightly WALT DISNEY WORLD® fireworks spectacles. Also available with two bedrooms.

**IDEAL FOR 2 ADULTS AND 2 CHILDREN**

[VIEW DETAILS & FLOORPLAN >](#)



SUITE DETAILS

# PARK VIEW DELUXE SUITE

**LOCATION**

6th to 12th floors

**VIEWS**

Resort's pools, lakes, woodlands, golf course, and WALT DISNEY WORLD® fireworks

**SIZE**

1,000 sq. ft. (93 m2)

**UNIQUE FEATURES**

- Formal foyer with coat closet
- Interior and Exterior tables for dining
- Workspace by the window
- Sitting area in the bedroom
- Two residential-style walk-in closets
- Extra-wide furnished balcony

**BEDS**

One king bed, plus one queen-size sofa bed

**BATHROOMS**

- One oversized white marble bathroom, including two sinks, vanity mirror with TV, private water closet, walk-in shower, and free-standing oval tub
- One full bathroom with standing shower

**CONNECTING ROOMS**

Available as a two bedroom suite by adding a guestroom with either a King Bed or two queen beds.

**DOWNLOAD**

[SUITE FACT SHEET >](#)





[WELCOME](#)

[GUEST ROOMS](#)

[SUITES](#)

[SPECIALTY SUITES](#)

[AMENITIES](#)

[CONTACT](#)

[Golden Oak View](#)

[Lake View Deluxe](#)

[Park View](#)

[Park View Deluxe](#)

[Grand Suite](#)

[Presidential Suite](#)

[Royal Suite](#)

[Buyouts](#)



## GRAND SUITE

Impressive for entertaining or relaxing with friends and family, this oversized one-bedroom suite truly lives up to its name. The expandable layout is focused around a large living area, complete with a dining table for eight and a wet bar. Share quality time lounging in the sun on two furnished balconies, perfect for viewing the nightly WALT DISNEY WORLD® fireworks. Also available with up to six bedrooms.

IDEAL FOR 2 ADULTS AND 2 CHILDREN

[VIEW DETAILS & FLOORPLAN >](#)





[WELCOME](#)

[GUEST ROOMS](#)

[SUITES](#)

[SPECIALTY SUITES](#)

[AMENITIES](#)

[CONTACT](#)

[Golden Oak View](#)

[Lake View Deluxe](#)

[Park View](#)

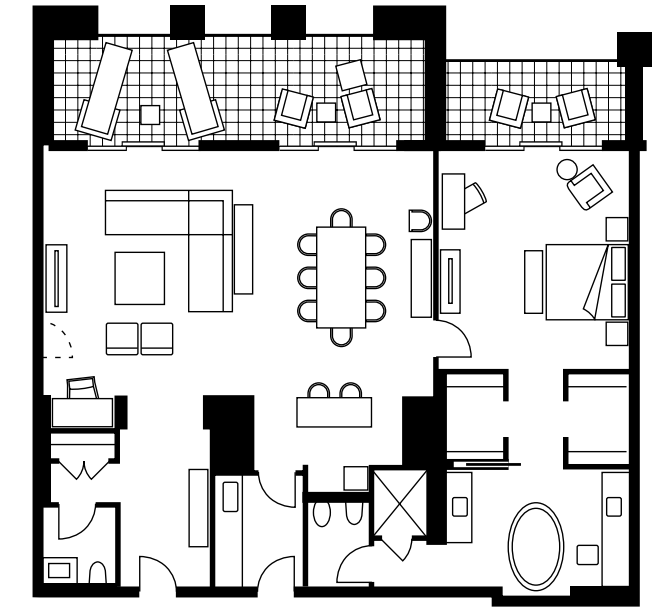
[Park View Deluxe](#)

[Grand Suite](#)

[Presidential Suite](#)

[Royal Suite](#)

[Buyouts](#)



**SUITE DETAILS**

# GRAND SUITE

**LOCATION**

14th to 16th floors

**VIEWS**

Resort's pools, lakes, woodlands, golf course, and WALT DISNEY WORLD® fireworks

**SIZE**

1,700 sq. ft. (158 m2)

**UNIQUE FEATURES**

- Formal foyer with coat closet
- Comfortable lounge seating for eight
- Interior and Exterior tables for dining
- Wet bar with counter seating
- Pantry kitchen with service entrance
- Sitting area and desk in bedroom
- Two separate furnished balconies
- Two residential-style walk-in closets

**BEDS**

One king bed, plus one queen-size sofa bed

**BATHROOMS**

- One oversized white marble bathroom, including two sinks, vanity mirror with TV, private water closet, walk-in shower, and free-standing oval tub beside window
- One guest powder room

**CONNECTING ROOMS**

Available with up to six bedrooms by connecting to various guest rooms, including king and queen beds.

[DOWNLOAD SUITE FACT SHEET >](#)



[WELCOME](#)

[GUEST ROOMS](#)

[SUITES](#)

[SPECIALTY SUITES](#)

[AMENITIES](#)

[CONTACT](#)

[Golden Oak View](#)

[Lake View Deluxe](#)

[Park View](#)

[Park View Deluxe](#)

[Grand Suite](#)

[Presidential Suite](#)

[Royal Suite](#)

[Buyouts](#)

# PRESIDENTIAL SUITE

Dazzle your guests in this unforgettable one-bedroom suite, perched on our 16th floor. Remarkable details include a fireplace in the dining area, a private office, and an expansive wrap-around terrace with nightly fireworks views. The primary bedroom is a luxurious sanctuary with a full dressing room and tub where you can watch sunset over EPCOT®'s iconic Spaceship Earth. Also available with three or four bedrooms.

IDEAL FOR 2 ADULTS

[TAKE A VIDEO TOUR >](#)

[VIEW DETAILS & FLOORPLAN >](#)





[WELCOME](#)

[GUEST ROOMS](#)

[SUITES](#)

[SPECIALTY SUITES](#)

[AMENITIES](#)

[CONTACT](#)

[Golden Oak View](#)

[Lake View Deluxe](#)

[Park View](#)

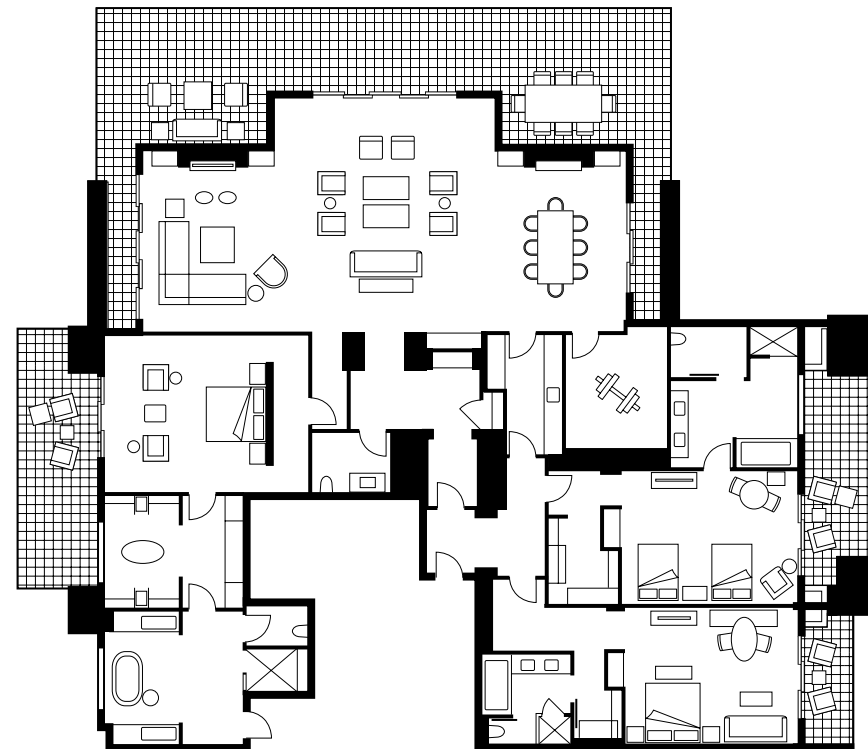
[Park View Deluxe](#)

[Grand Suite](#)

[Presidential Suite](#)

[Royal Suite](#)

[Buyouts](#)



**SUITE DETAILS**

# PRESIDENTIAL SUITE

**LOCATION**

16th floor

**VIEWS**

EPCOT®

**SIZE**

2,750 sq. ft. (255.4 m2)

**UNIQUE FEATURES**

- Formal foyer with coat closet
- Expansive living room with two seating areas, dining table for eight and gas fireplace
- Wrap-around terrace with outdoor dining table for eight
- Pantry kitchen with service entrance
- Personal gym
- Bedroom with private terrace, dressing room with window and lavish bathroom with window

**BEDS**

One king bed

**BATHROOMS**

- One oversized white marble bathroom, including two sinks, vanity mirror with TV, private water closet with bidet, walk-in shower, and free-standing oval tub beside window
- One guest powder room

**CONNECTING ROOMS**

- Available as a two bedroom suite by adding a guestroom with two queen beds. Expand to a three or four bedroom suite with the addition of one or two guest rooms, each with a King bed.

**[DOWNLOAD](#)**

**[SUITE FACT SHEET >](#)**





[WELCOME](#)

[GUEST ROOMS](#)

[SUITES](#)

[SPECIALTY SUITES](#)

[AMENITIES](#)

[CONTACT](#)

[Golden Oak View](#)

[Lake View Deluxe](#)

[Park View](#)

[Park View Deluxe](#)

[Grand Suite](#)

[Presidential Suite](#)

[Royal Suite](#)

[Buyouts](#)



## ROYAL SUITE

Our Resort's most prestigious accommodation, this expansive one-bedroom suite on the 16th floor makes an ideal home base for large family retreats and celebrations. Enjoy indoor and outdoor dining, a media room, and private office. Celebrate each night with views of MAGIC KINGDOM® Park's fireworks spectacular from the wrap-around terrace. Also available with up to nine bedrooms.

IDEAL FOR 2 ADULTS

[TAKE A VIDEO TOUR >](#)

[VIEW DETAILS & FLOORPLAN >](#)



[WELCOME](#)

[GUEST ROOMS](#)

[SUITES](#)

[SPECIALTY SUITES](#)

[AMENITIES](#)

[CONTACT](#)

[Golden Oak View](#)

[Lake View Deluxe](#)

[Park View](#)

[Park View Deluxe](#)

[Grand Suite](#)

[Presidential Suite](#)

[Royal Suite](#)

[Buyouts](#)

**SUITE DETAILS**

# ROYAL SUITE

**LOCATION**

16th floor

**VIEWS**

MAGIC KINGDOM® Park

**SIZE**

3,300 sq. ft. (306.5 m2)

**UNIQUE FEATURES**

- Formal foyer with coat closet
- Living room with two seating areas, dining table for eight and two gas fireplaces
- Wrap-around terrace with outdoor dining table for eight
- Pantry kitchen with service entrance
- Media room with lounge seating and large-screen TV
- Private office
- Bedroom with private terrace, dressing room with window and lavish bathroom with window

**BEDS**

One king bed

**BATHROOMS**

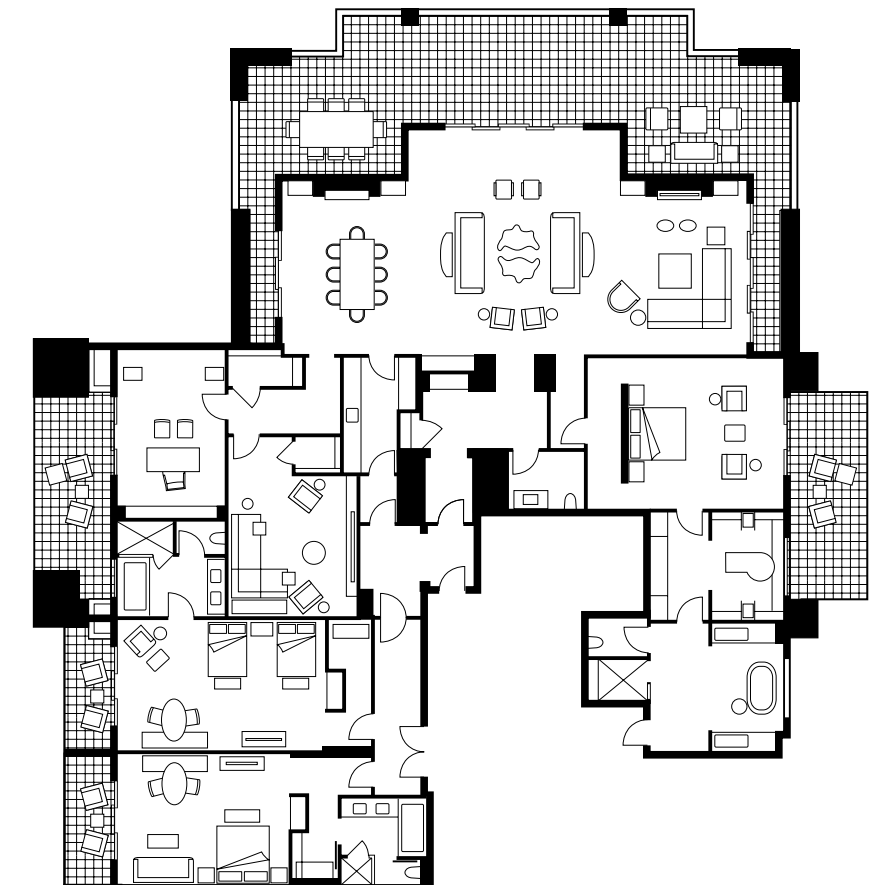
- One oversized white marble bathroom, including two sinks, vanity mirror with TV, private water closet, walk-in shower, and free-standing oval tub beside window
- One guest powder room

**CONNECTING ROOMS**

Available with up to nine bedrooms by connecting to various guest rooms and suites, including king and two queen beds.

**DOWNLOAD**

[SUITE FACT SHEET >](#)





[WELCOME](#)

[GUEST ROOMS](#)

[SUITES](#)

[SPECIALTY SUITES](#)

[AMENITIES](#)

[CONTACT](#)

[Golden Oak View](#)

[Lake View Deluxe](#)

[Park View](#)

[Park View Deluxe](#)

[Grand Suite](#)

[Presidential Suite](#)

[Royal Suite](#)

[Buyouts](#)



## TOP FLOOR *BUYOUT*

For a truly unforgettable vacation with up to 50 friends and family members, book our entire 16th floor all to yourself. Create a private sanctuary encompassing all of our most luxurious accommodations, including the nine-bedroom Royal Suite, the four-bedroom Presidential Suite, and eight additional guest rooms – for a total of 21 bedrooms. Your private Concierge will work with you to orchestrate special experiences to share, creating memories that will last a lifetime.

**IDEAL FOR UP TO 50 GUESTS**

[VIEW DETAILS & FLOORPLAN >](#)



DETAILS

# TOP FLOOR *BUYOUT*

**LOCATION**

16th floor

**VIEWS**

360-degree views, including the lake, golf course, EPCOT®, and the MAGIC KINGDOM®  
Park nightly fireworks

**SIZE**

18,040 sq. ft. (1,676 m2)

**UNIQUE FEATURES**

- Private elevator access
- Private Concierge
- Guest Experience Attendants

**BEDS**

Collection of king beds and queen beds; some available with sofas and cribs

**BATHROOM**

Collection of full bathrooms and powder rooms

**CONNECTING ROOMS**

Encompassing the Presidential Suite and Royal Suite, along with a variety of standard suites and guest rooms for a total of 21 bedrooms



WELCOME

GUEST ROOMS

SUITES

SPECIALTY SUITES

AMENITIES

CONTACT

Dining

Recreation

Spa & Fitness

Tennis & Golf

Shopping & Touch of Disney

# DINING

To satisfy every taste and elevate every moment, we offer six Four Seasons dining venues – from casual kid-friendly options to Ravello for traditional Italian and Plancha for modern Latin-American cuisine. Celebrate a special occasion with Michelin-starred dining at Capa, our 17th-floor rooftop steakhouse and bar. At any hour day or night, our legendary In-Room Dining will turn your guest room or suite into your own private dining room.

[LEARN ABOUT OUR DINING OPTIONS >](#)





# POOLS & RECREATION

Plan for at least an entire day of fun at Explorer Island, our five-acre (two-hectare) water park, featuring with two water slides, a splash zone and lazy river. Play at the Family Pool, or unwind at The Oasis, our chic, adult-only pool. Recreation facilities include beach volleyball, a basketball court, rock-climbing wall, and The Hideout games room. For even more kid-friendly entertainment, there's our award-winning Kids For All Seasons program and an all-day complimentary kids club!

[LEARN ABOUT EXPLORER ISLAND >](#)





**WELCOME**

**GUEST ROOMS**

**SUITES**

**SPECIALTY SUITES**

**AMENITIES**

**CONTACT**

Dining

Recreation

Spa & Fitness

Tennis & Golf

Shopping & Touch of Disney



## SPA & FITNESS

An oasis of serenity to help you look and feel your best, our Spa offers a comprehensive collection of body therapies, aesthetic services, and expert hair and nail care. This expansive sanctuary offers 18 treatment rooms, including four couples' suites and two private waterside bungalows. Enhance your well-being in our 24-hour Fitness Center, featuring state-of-the-art strength and cardio machines and on-demand classes in our aerobics studio.

[LEARN ABOUT OUR SPA >](#)





[WELCOME](#)

[GUEST ROOMS](#)

[SUITES](#)

[SPECIALTY SUITES](#)

[AMENITIES](#)

[CONTACT](#)

[Dining](#)

[Recreation](#)

[Spa & Fitness](#)

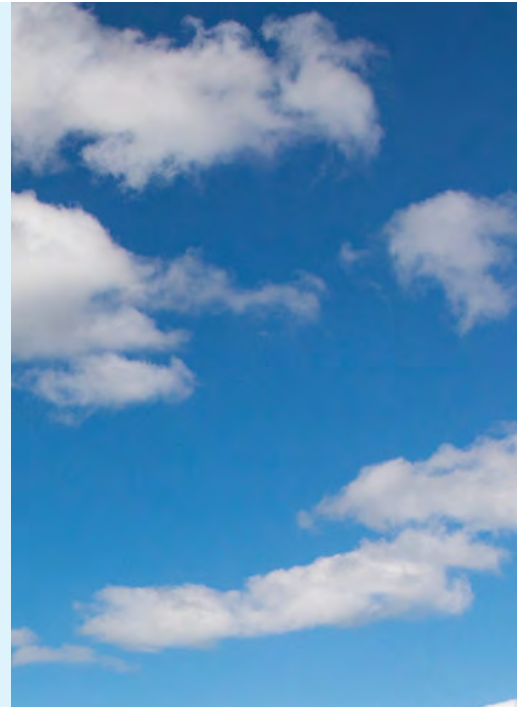
[Tennis & Golf](#)

[Shopping & Touch of Disney](#)

# TENNIS & GOLF

Celebrate your competitive spirit with our premium golf and tennis facilities. A Certified Audubon Sanctuary, Four Seasons Golf and Sports Club Orlando features a picturesque, 18-hole course designed by Tom Fazio, highlighting the topography unique to Central Florida. Private lessons and instruction are available for golf and tennis with on-site pros.

[LEARN ABOUT OUR GOLF COURSE >](#)







[WELCOME](#)

[GUEST ROOMS](#)

[SUITES](#)

[SPECIALTY SUITES](#)

[AMENITIES](#)

[CONTACT](#)

[Dining](#)

[Recreation](#)

[Spa & Fitness](#)

[Tennis & Golf](#)

[Shopping & Touch of Disney](#)

# DISNEY *EXPERIENCES*

Four Seasons offers convenient access to WALT DISNEY WORLD® Resort for those who wish to experience the magic of the destination. The Disney Planning Center in our lobby can assist with theme park tickets, dining reservations, VIP Tours, and more. Enjoy complimentary transportation to the parks and our own twice weekly character breakfast with Goofy & His Pals at Ravello. Four Seasons guests can enjoy even more time to experience WALT DISNEY WORLD® Resort with 30 minutes Early Theme Park Entry\* to any theme park of choice daily.

[LEARN ABOUT DISNEY EXPERIENCES >](#)





# PLAN YOUR *DREAM STAY* IN ORLANDO

If you have any questions about our suites or to begin planning your stay, please be in touch with our sales team.



The Four Seasons App



Facebook Messenger: Four Seasons Resort Orlando at Walt Disney World® Resort



Text or WhatsApp +1 (407) 988 2367

Four Seasons Resort Orlando At Walt Disney World®  
Resort 10100 Dream Tree Blvd  
Lake Buena Vista, FL 32836, U.S.A.

T. 1 (407) 313-7777



[FOURSEASONS.COM/ORLANDO](https://www.fourseasons.com/orlando)

