

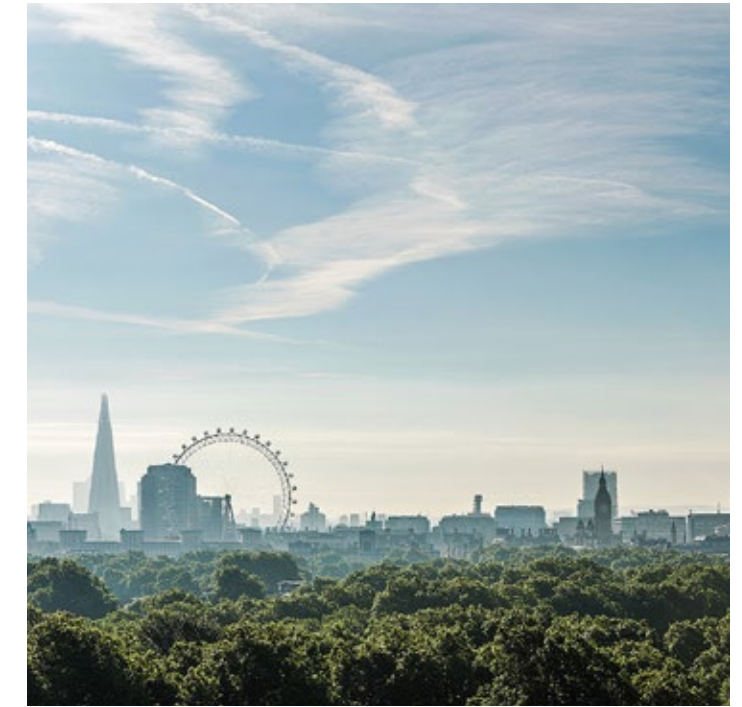


FOUR SEASONS  
HOTEL  
LONDON AT PARK LANE

# THE SUITE PORTFOLIO

Discover our collection of 42 bespoke suites,  
enhanced with fireplaces, terraces and  
stunning views of the city and park.

[EXPLORE THE PORTFOLIO >](#)



---

EVERYTHING  
YOU LOVE  
ABOUT LONDON

---

In the heart of Mayfair, just across from Hyde Park, our Four Seasons flagship offers the ultimate London location. It's an easy stroll to the best shopping in Mayfair or Knightsbridge. Or let us arrange a complimentary journey by Rolls Royce, anywhere within a one-mile radius, letting you arrive in style at the theatre or a restaurant - enjoying the ultimate in British sophistication.

[PREVIOUS](#) / [NEXT](#)





## STAY IN ULTIMATE STYLE

After a day of shopping and sight-seeing, return to Four Seasons and sink into plush residential comfort. From our signature Amaranto restaurant and bar to our sun-filled rooftop spa and fitness centre, we offer everything you could wish in a London hideaway.

[PREVIOUS](#) / [NEXT](#)





ALWAYS  
AT YOUR  
CALL

Relax in the knowledge that our Four Seasons experts are ready to assist you around the clock - arranging for after-hours shopping or private access to the capital's most famous attractions. Our team is committed to your constant peace of mind and enjoyment, creating your very best stay in London.

[PREVIOUS](#) / [NEXT](#)



Executive Conservatory

Westminster

Mayfair

Ambassador

Deluxe One-Bedroom

Park

## SUITES

Our Four Seasons suites are the vision of acclaimed designer Pierre-Yves Rochon—balancing eclectic British sophistication and sleek modern style. Capturing a distinct sense of place, the interiors reflect both our park-side setting and the fashionable spirit of Mayfair. Every detail has been executed with impeccable craftsmanship.

[EXPLORE OUR SUITES >](#)



[Executive Conservatory](#)

[Westminster](#)

[Mayfair](#)

[Ambassador](#)

[Deluxe One-Bedroom](#)

[Park](#)



OPEN PLAN | FROM 49 m<sup>2</sup> (527 sq. ft.) | CITY VIEW

## EXECUTIVE CONSERVATORY SUITE

Flooded with natural daylight from floor-to-ceiling windows, our Executive Conservatory Suites are elevated on the second floor with views of the Mayfair streetscape. Relax into this open-plan layout, casually combining the lounge and sleeping areas. For some fresh air, step outside to a semi-private landscaped terrace, furnished with a table and chairs for two.

[ROOM DETAILS & FLOORPLAN](#)



Executive Conservatory

Westminster

Mayfair

Ambassador

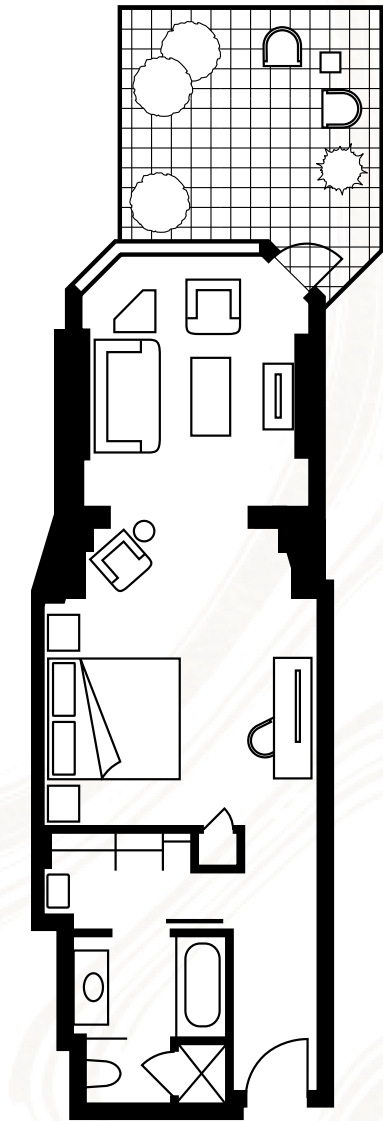
Deluxe One-Bedroom

Park



## EXECUTIVE CONSERVATORY SUITE

- SIZE** From 49 m<sup>2</sup> (572 sq. ft.)
- LOCATION** 2nd floor
- VIEW** City
- MAXIMUM OCCUPANCY** King bed and sofa bed: 3 adults, or 2 adults and 2 children  
Crib for child under 2
- HIGHLIGHTS** Lounge area with seating for three and LG LCD TV  
Semi-private terrace with seating  
Writing desk  
Spacious bathroom with vanity sink, mirror with integrated TV, walk-in shower, deep tub and cubicle with WC and bidet



[return to the SUITE OVERVIEW](#)  
[learn more on FOURSEASONS.COM](#)



Executive Conservatory

Westminster

Mayfair

Ambassador

Deluxe One-Bedroom

Park



ONE BEDROOM | 63 m<sup>2</sup> (678 sq. ft.) | CITY VIEW

## WESTMINSTER SUITE

Ideal for a romantic or family getaway, our Westminster Suites offer distinctly British charm. The classic yet contemporary style is enhanced by upper-floor views of the Mayfair streetscape. Unwind in the sophisticated chic of the living room, then move to the spacious bedroom, complete with a Juliet balcony, a walk-in wardrobe and a marble-detailed ensuite bathroom.

ROOM DETAILS & FLOORPLAN





Executive Conservatory

Westminster

Mayfair

Ambassador

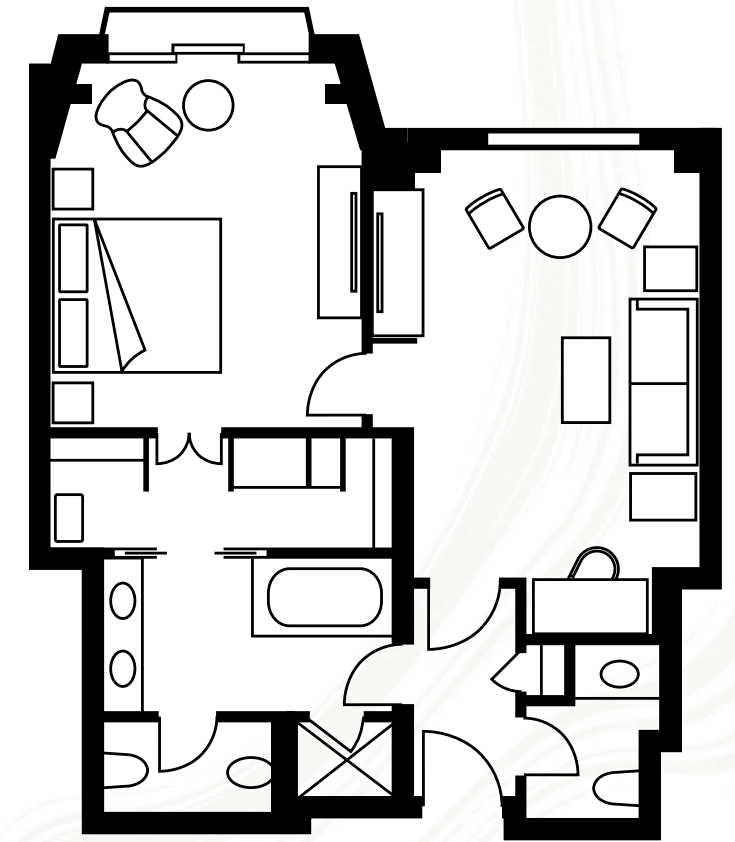
Deluxe One-Bedroom

Park



### WESTMINSTER SUITE

- SIZE** From 63 m<sup>2</sup> (678 sq. ft.)
- LOCATION** 6th to 9th floors
- VIEW** City
- MAXIMUM OCCUPANCY** King bed and sofa bed: 3 adults, or 2 adults and 1 child  
Crib for child under 2
- DÉCOR** Walnut-coloured veneer panels with powder blue walls and Savile Row check on curtains and wallpaper
- HIGHLIGHTS** Living room with lounge seating, sofa bed, 65" Samsung LCD TV, writing desk and dining table for two  
Bedroom with 55" LCD TV, window-side chair, Juliet balcony and walk-in wardrobe  
Spacious bathroom with double vanity sinks, walnut and marble cabinetry, mirror with integrated TV, walk-in shower, deep tub and cubicle with WC and bidet  
Guest powder room



*return to the* SUITE OVERVIEW  
*learn more on* FOURSEASONS.COM



Executive Conservatory

Westminster

Mayfair

Ambassador

Deluxe One-Bedroom

Park



ONE BEDROOM | 56 m<sup>2</sup> (603 sq. ft.) | PARK VIEW

### MAYFAIR SUITE

The perfect oasis for a couple's escape. Our bright, airy Mayfair Suites look through a floor-to-ceiling bay window onto the lush landscapes of Hyde Park. Inspired by the outdoors, interiors feature light natural colours and soft green accents. The spacious living room is separated by a sliding door from the bedroom, which offers a walk-in wardrobe and deluxe bathroom. Two leather swivel chairs by the window provide a lovely spot to relax after a day of exploring.

ROOM DETAILS & FLOORPLAN



Executive Conservatory

Westminster

Mayfair

Ambassador

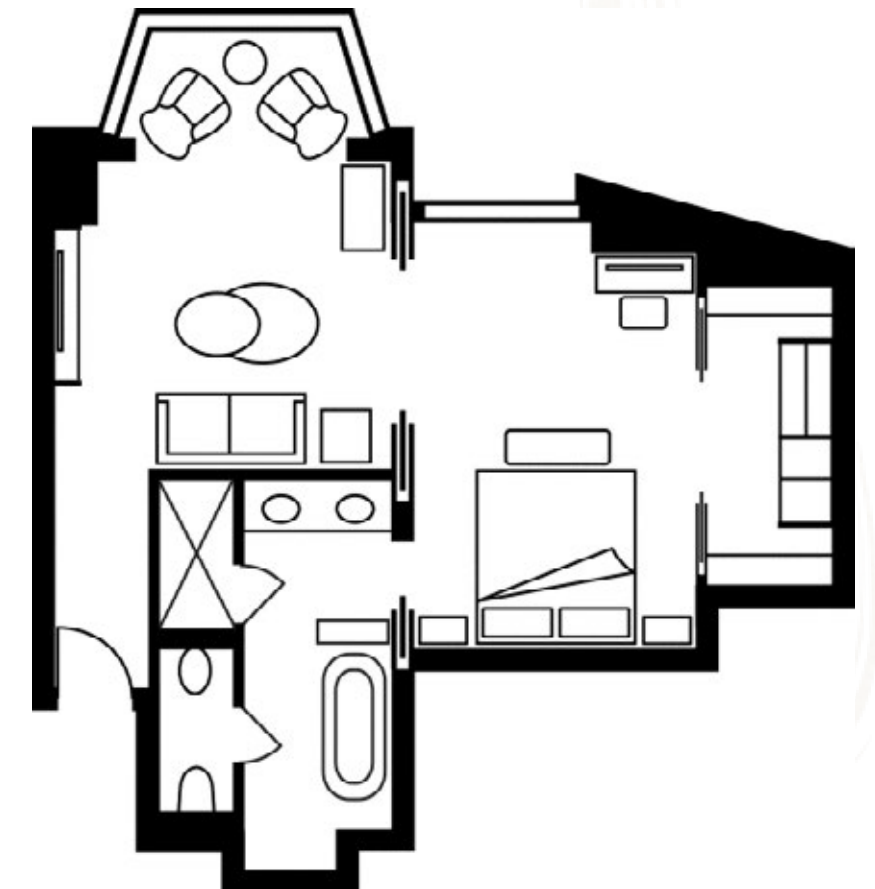
Deluxe One-Bedroom

Park



## MAYFAIR SUITE

- SIZE** 56 m<sup>2</sup> (603 sq. ft.)
- LOCATION** 3rd, 4th, 6th, 7th and 8th floors
- VIEW** Park Lane and Mayfair
- MAXIMUM OCCUPANCY** King bed: 2 adults  
Crib for child under two
- DÉCOR** Sycamore panels with light natural colours and soft green accents
- HIGHLIGHTS** Living room with stylish sofa and two luxurious chairs, 65" Samsung LED TV and floor-to-ceiling bay window  
Bedroom with 55" LCD TV and walk-in wardrobe  
Spacious bathroom with marble double vanity, mirror with integrated TV, walk-in shower, deep tub and cubicle with WC and bidet



*return to the* SUITE OVERVIEW

*learn more on* FOURSEASONS.COM



Executive Conservatory

Westminster

Mayfair

Ambassador

Deluxe One-Bedroom

Park



ONE OR TWO BEDROOMS | FROM 75 m<sup>2</sup> (807 sq. ft.) | CITY VIEW

### AMBASSADOR SUITE

Designed with soft blues and an array of textures, the spacious Ambassador suites offer a peaceful escape from the busy metropolis outside. From the formal foyer, step into the spacious living room with lounge seating and a dining table for four. The separate bedroom includes a walk-in wardrobe and a luxurious marble bathroom.

ROOM DETAILS & FLOORPLAN



Executive Conservatory

Westminster

Mayfair

Ambassador

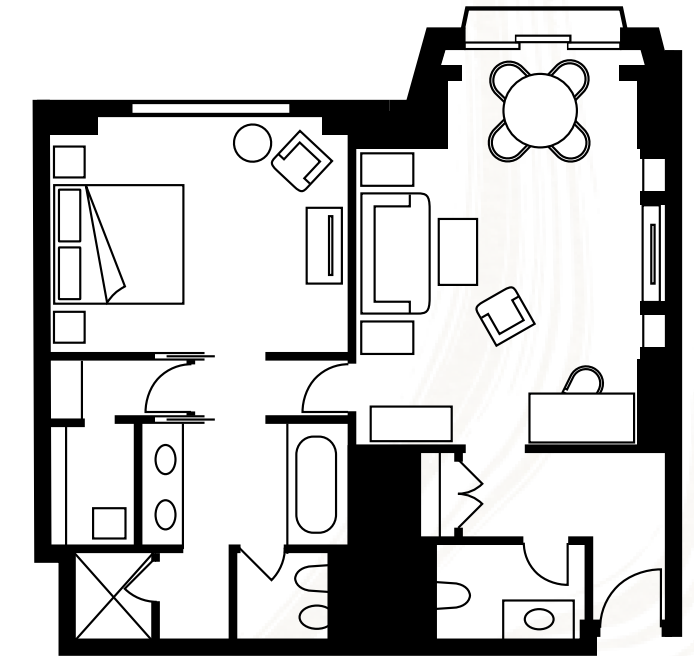
Deluxe One-Bedroom

Park



## AMBASSADOR SUITE

- SIZE** One Bedroom: 75 m<sup>2</sup> (807 sq. ft.)  
Two Bedrooms: 110 m<sup>2</sup> (1,184 sq. ft.)
- LOCATION** 3rd to 9th floors
- VIEW** City
- MAXIMUM OCCUPANCY** King bed and sofa bed: 3 adults, or 2 adults and 2 children  
King bed, sofa bed and two twin beds: 5 adults, or 3 adults and 2 children  
Crib for child under two
- DÉCOR** Walnut veneer panels with blue colour scheme
- HIGHLIGHTS** Living room with lounge seating for three, sofa bed, 42" LG LCD TV, writing desk and dining table for four  
Master bedroom with 42" LCD TV and walk-in wardrobe  
Master bathroom with marble double vanity, walnut and marble cabinetry, mirror with integrated TV, walk-in shower, deep tub and cubicle with WC and bidet  
Guest powder room



[return to the SUITE OVERVIEW](#)  
[learn more on FOURSEASONS.COM](#)



Executive Conservatory

Westminster

Mayfair

Ambassador

Deluxe One-Bedroom

Park



ONE OR TWO BEDROOMS | FROM 112 m<sup>2</sup> (1,205 sq. ft.) | PARK VIEW

### DELUXE ONE-BEDROOM SUITE

Spread out and relax. With ample space for entertaining, work or leisure, our Deluxe One-Bedroom Suites showcase park views from Juliet balconies in both the living room and bedroom. The living room features lounge seating around a marble fireplace, while the formal dining room includes a table for four. The master retreat offers a large dressing room and deluxe bathroom.

ROOM DETAILS & FLOORPLAN



Executive Conservatory

Westminster

Mayfair

Ambassador

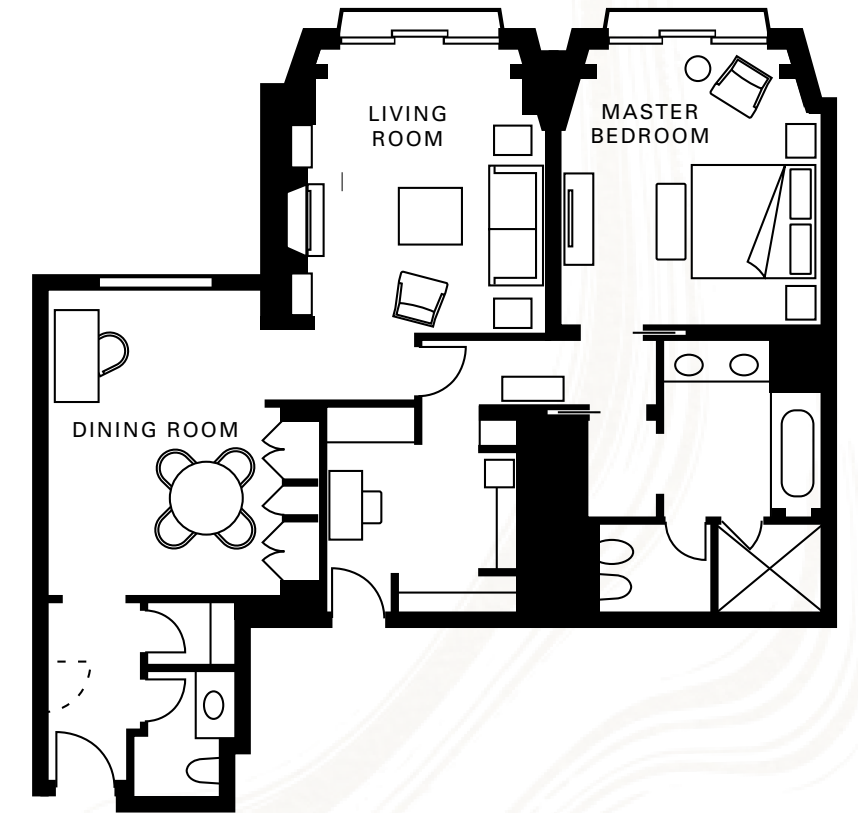
Deluxe One-Bedroom

Park



## DELUXE ONE-BEDROOM SUITE

SIZE	<p>One Bedroom: 112 m<sup>2</sup> (1,205 sq. ft.)                  Two Bedrooms: 147 m<sup>2</sup> (1,582 sq. ft.)</p>
LOCATION	6th to 8th floors
VIEW	Hyde Park
MAXIMUM OCCUPANCY	<p>King bed and sofa bed: 3 adults,                  or 2 adults and 2 children</p> <p>King bed, sofa bed and two twin beds:                  5 adults, or 3 adults and 2 children</p> <p>Crib for child under two</p>
DÉCOR	Sycamore panels with gold or burgundy colour scheme
HIGHLIGHTS	<p>Living room with lounge seating, sofa bed, marble fireplace, enhanced audiovisual system, 50" LG LCD TV and dining table for four</p> <p>Master bedroom with 42" Loewe LCD TV</p> <p>Master bathroom with marble double vanity, wood and marble cabinetry, mirror with integrated TV, walk-in shower, deep tub and cubicle with WC and bidet</p> <p>Guest powder room</p>



[return to the SUITE OVERVIEW](#)  
[learn more on FOURSEASONS.COM](#)



[Executive Conservatory](#)

[Westminster](#)

[Mayfair](#)

[Ambassador](#)

[Deluxe One-Bedroom](#)

[Park](#)



ONE BEDROOM | 103 m<sup>2</sup> (1,108 sq. ft.) | PARK VIEW

## PARK SUITE

Bright with natural light, our elegant Park Suites feature a floor-to-ceiling bay window with a spectacular view of Hyde Park and Park Lane. A mirrored foyer leads through double doors into the living room, including a marble fireplace and a dining table for four. Accessed through a sun-lit dressing room, the bedroom offers a window-side chaise longue and a Juliet balcony with Hyde Park views.

[ROOM DETAILS & FLOORPLAN](#)





Executive Conservatory

Westminster

Mayfair

Ambassador

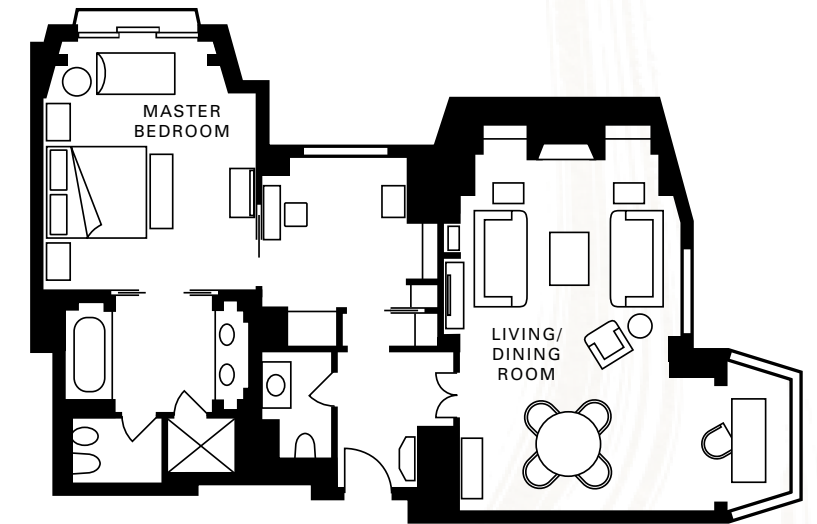
Deluxe One-Bedroom

Park



## PARK SUITE

- SIZE** 103 m<sup>2</sup> (1,108 sq. ft.)  
(May connect externally to a Mayfair Suite)
- LOCATION** 3rd, 4th, 6th and 7th floors
- VIEW** Hyde Park and Park Lane
- MAXIMUM OCCUPANCY** King bed and sofa bed: 3 adults, or 2 adults and 2 children  
Crib for child under two
- DÉCOR** Sycamore panels with gold or burgundy colour scheme
- HIGHLIGHTS** Living room with comfortable lounge seating for five, marble fireplace, writing desk, 50" Loewe LCD TV and dining table for four  
Bedroom with spacious dressing room, 42" LG LCD TV, window-side chaise longue and Juliet balcony  
Bathroom with black marble double vanity, mirror with integrated TV, heated floor, walk-in shower, deep tub and cubicle with WC and bidet  
Guest powder room



*return to the* SUITE OVERVIEW  
*learn more on* FOURSEASONS.COM



[Grand One-Bedroom](#)

[Terrace](#)

[Garden](#)

[The Blue](#)

[Presidential](#)

## SPECIALTY SUITES

With abundant space and notable features such as marble fireplaces and large terraces, our Specialty Suites feel like private apartments – ideal for special occasions, lavish entertaining or extended stays. Embodying the elegance of Mayfair, these suites inspire a comfortable residential lifestyle, enhanced by round-the-clock Four Seasons care.

[EXPLORE OUR SPECIALTY SUITES >](#)



Grand One-Bedroom

Terrace

Garden

The Blue

Presidential



ONE OR TWO BEDROOMS | FROM 99 m<sup>2</sup> (1,065 sq. ft.) | CITY VIEW

## GRAND ONE-BEDROOM SUITE

Large, luxurious and deeply comfortable. Entered through a formal foyer, our Grand Suite's living room features a marble fireplace and an adjoining dining room for four. For an impromptu meal, simply request In-Room Dining, available around the clock. The bedroom includes an oversized dressing room leading off the ensuite bathroom, as well as its own private landscaped terrace.

ROOM DETAILS & FLOORPLAN



Grand One-Bedroom

Terrace

Garden

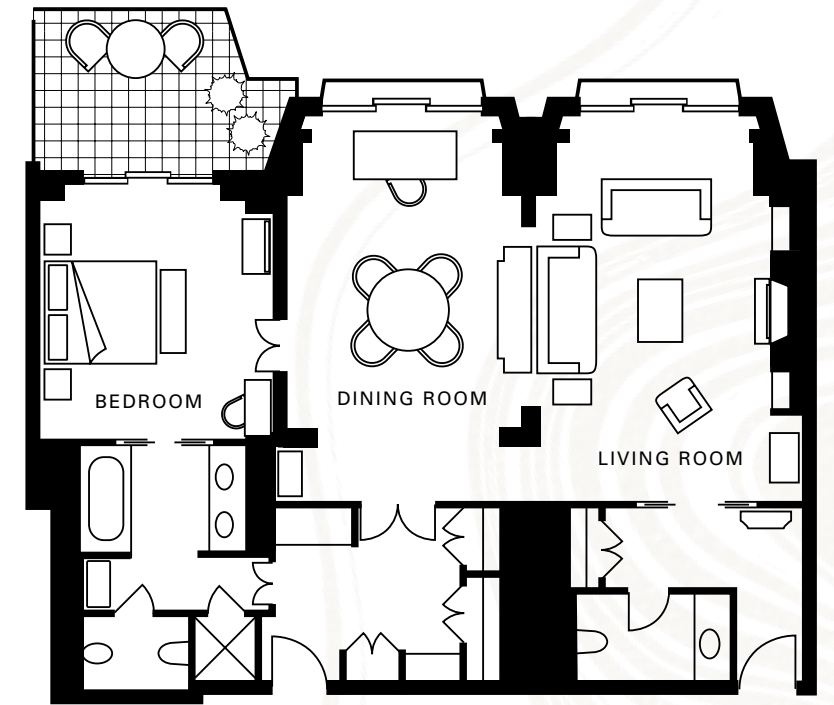
The Blue

Presidential



## GRAND ONE-BEDROOM SUITE

- SIZE** One Bedroom: 99 m<sup>2</sup> (1,065 sq. ft.)  
Two Bedrooms: 134 m<sup>2</sup> (1,442 sq. ft.)
- LOCATION** 2nd floor
- VIEW** City
- MAXIMUM OCCUPANCY** King bed and sofas: 3 adults, or 2 adults and 2 children  
Two king beds and sofas: 5 adults, or 3 adults and 2 children  
Crib for child under two
- DÉCOR** Sycamore panels with gold walls
- HIGHLIGHTS** Living room with marble fireplace and 50" Loewe LCD TV  
Formal dining room for four (one suite includes a butler's pantry)  
Master bedroom with 42" LG LCD TV, oversized dressing room and terrace access  
Landscaped terrace with seating for two to four people  
Master bathroom with double vanity, mirror with integrated TV, heated floor, walk-in shower, deep tub and cubicle with WC and bidet  
Guest powder room



*return to the* SUITE OVERVIEW

*learn more on* FOURSEASONS.COM



Grand One-Bedroom

Terrace

Garden

The Blue

Presidential



ONE OR TWO BEDROOMS | FROM 137 m<sup>2</sup> (1,474 sq. ft.) | CITY VIEW

### TERRACE SUITE

Like having your own private garden, the expansive outdoor space in our Terrace Suite is ideal for spring and summer parties. This apartment-style suite is entered through a grand formal entrance hall. The open-plan living room features lounge seating around a marble fireplace and a dining area for four. The magnificent master bedroom includes a chaise longue, a spacious dressing room and marble ensuite bathroom.

ROOM DETAILS & FLOORPLAN



Grand One-Bedroom

Terrace

Garden

The Blue

Presidential



## TERRACE SUITE

**SIZE** One Bedroom: 137 m<sup>2</sup> (1,474 sq. ft.)  
 Two Bedrooms: 172 m<sup>2</sup> (1,851 sq. ft.)

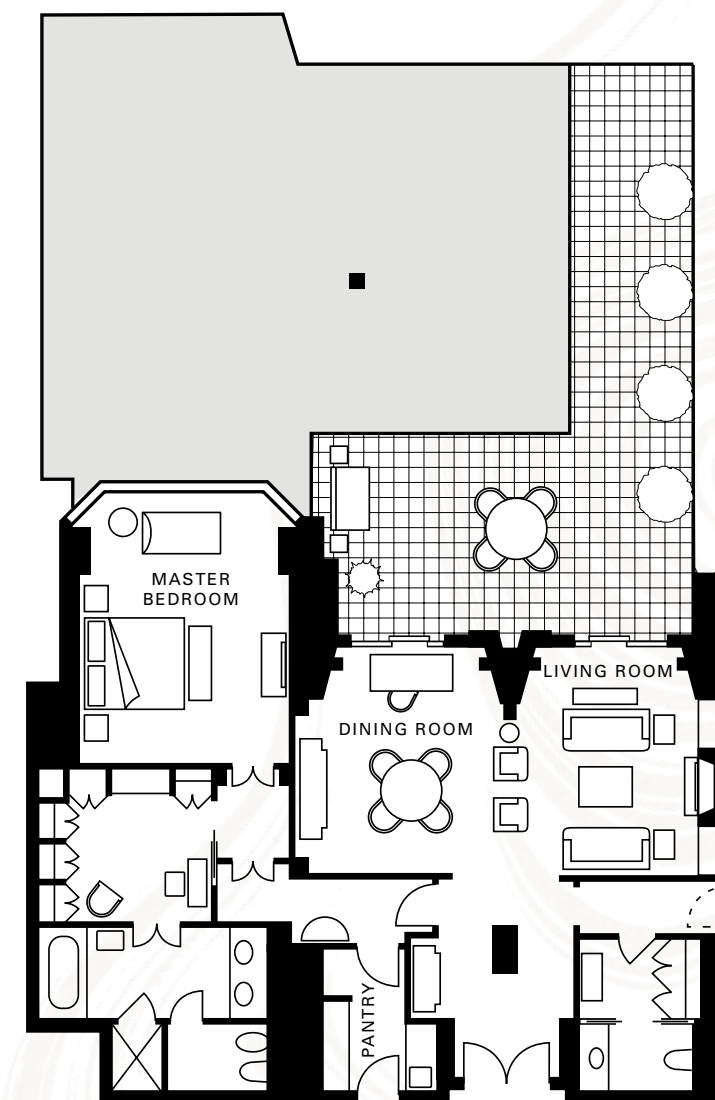
**LOCATION** 2nd floor

**VIEW** City

**MAXIMUM OCCUPANCY** King bed and sofabed: 3 adults, or 2 adults and 2 children  
 Two king beds and sofabed: 5 adults or 3 adults and 2 children  
 Crib for child under two

**DÉCOR** Sycamore panels with gold walls

**HIGHLIGHTS** Living room with marble fireplace, lounge seating for six, 50" Loewe LCD TV and glass double doors to the terrace  
 150-m<sup>2</sup> (1,615-sq.-ft.) landscaped terrace with seating for four  
 Dining table for four and small butler's pantry with service entrance  
 Writing desk  
 Master bedroom with 42" LG LCD, spacious dressing room and chaise longue beside a floor-to-ceiling bay window overlooking a grassy terrace  
 Master bathroom with marble double vanity, mirror with integrated TV, walk-in shower, deep tub and cubicle with WC and bidet  
 Guest powder room



[return to the SUITE OVERVIEW](#)

[learn more on FOURSEASONS.COM](#)



[Grand One-Bedroom](#)

[Terrace](#)

[Garden](#)

[The Blue](#)

[Presidential](#)



ONE BEDROOM | 128 m<sup>2</sup> (1,378 sq. ft.) | PARK VIEW

## GARDEN SUITE

With a spacious terrace looking directly north on Park Lane - including views of Hyde Park and the Amaranto terrace - our Garden Suite offers rich, residential-style luxury. The living room features comfortable lounge seating around a white marble fireplace, steps from the formal dining room. Double doors lead into the master bedroom with a large dressing room and lavish marble bathroom.

[ROOM DETAILS & FLOORPLAN](#)



Grand One-Bedroom

Terrace

Garden

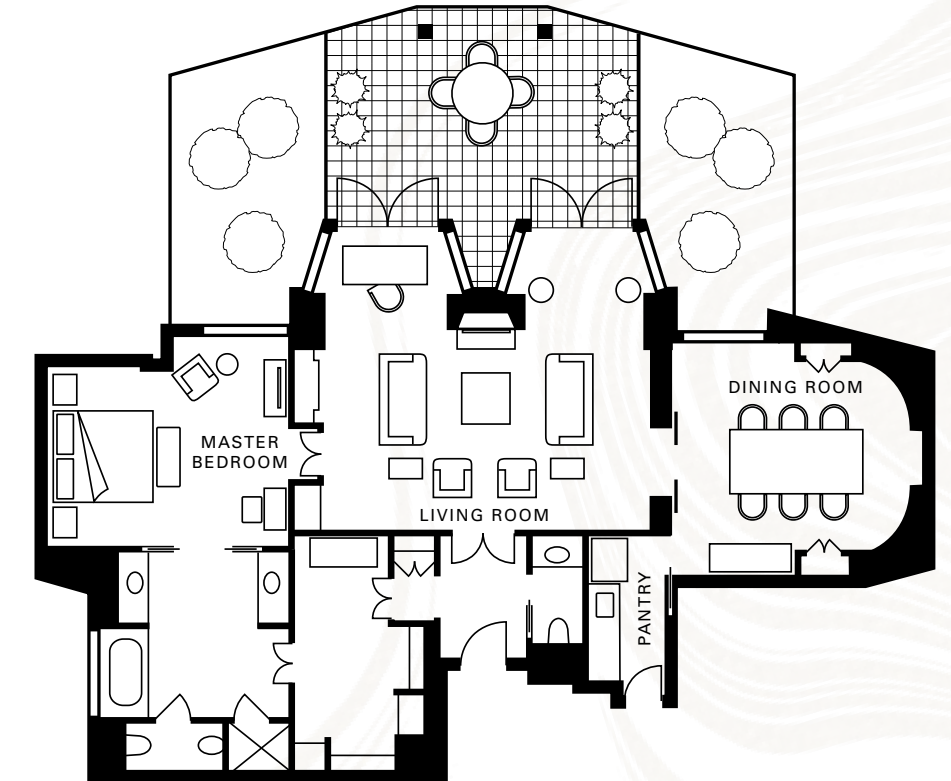
The Blue

Presidential



## GARDEN SUITE

- SIZE** 128 m<sup>2</sup> (1,378 sq. ft.)
- LOCATION** 2nd floor
- VIEW** Hyde Park
- MAXIMUM OCCUPANCY** King bed: 3 adults, or 2 adults and 2 children  
Crib for child under two
- DÉCOR** Sycamore panels with gold walls
- HIGHLIGHTS** Living room with lounge seating for six, white marble fireplace, writing desk and 50" Loewe TV  
Formal dining room with ebony table for six and butler's pantry with service entrance  
60-m<sup>2</sup> (646-sq.-ft.) landscaped terrace with seating for four  
Master bedroom with double-door entry, 42" LG TV and extra-large dressing room  
Large master bathroom with natural daylight, heated floor, two separate vanities, mirror with integrated TV, walk-in shower, deep tub and cubicle with WC and bidet  
Guest powder room



[return to the SUITE OVERVIEW](#)

[learn more on FOURSEASONS.COM](#)





Grand One-Bedroom

Terrace

Garden

The Blue

Presidential



ONE BEDROOM | 128 m<sup>2</sup> (1,378 sq. ft.) | PARK VIEW

## THE BLUE SUITE

Unforgettable for entertaining, The Blue features dramatic blue accents and panoramic eighth-floor views over Hyde Park and Park Lane. The curved living area features extensive lounge seating and a circular dining table for six. The lavish bedroom is accessed through a wood-panelled dressing room and features floor-to-ceiling windows and a Juliet balcony overlooking the park. Truly a one-of-a-kind London suite.

ROOM DETAILS & FLOORPLAN



Grand One-Bedroom

Terrace

Garden

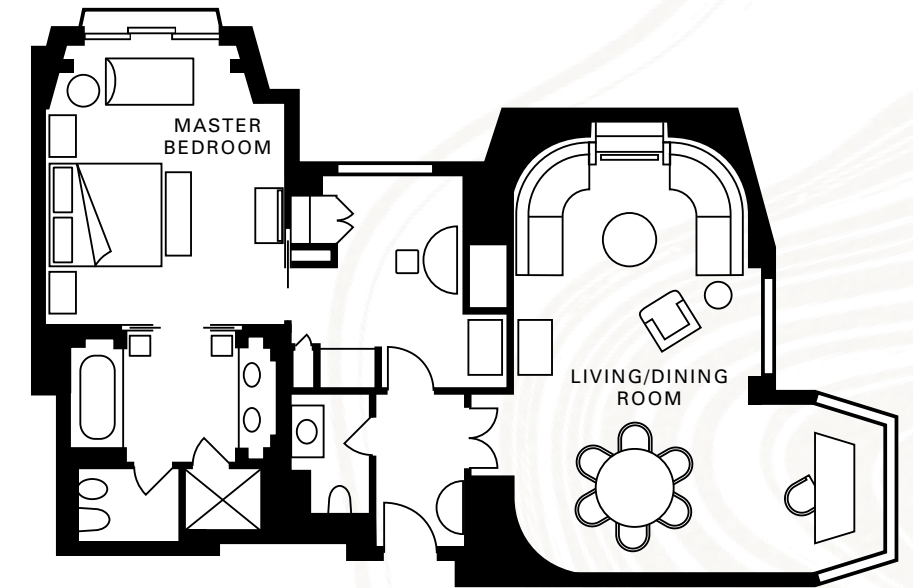
The Blue

Presidential



## THE BLUE SUITE

- SIZE** 103 m<sup>2</sup> (1,109 sq. ft.)
- LOCATION** 8th floor
- VIEW** Hyde Park and Park Lane
- MAXIMUM OCCUPANCY** King bed: 3 adults, or 2 adults and 2 children  
Crib for child under two
- DÉCOR** Blue colour scheme with Emporador marble and fine beige limestone
- HIGHLIGHTS** Living room with custom lounge seating for seven, 50" Loewe LCD TV, dining table for six and writing desk in a floor-to-ceiling bay window  
Bedroom with floor-to-ceiling windows, chaise longue, 42" LCD TV and wood-panelled dressing room  
Spacious bathroom with black marble double vanity, mirror with integrated TV, heated floor, walk-in shower, deep tub and cubicle with WC and bidet  
Guest powder room



*return to the* SUITE OVERVIEW

*learn more on* FOURSEASONS.COM



Grand One-Bedroom

Terrace

Garden

The Blue

Presidential



ONE, TWO OR THREE BEDROOMS | FROM 195 m<sup>2</sup> (2,098 sq. ft.) | PARK VIEW

### PRESIDENTIAL SUITE

An unrivalled Mayfair experience, the spacious, fifth-floor Presidential Suite presents iconic views of Park Lane and Hyde Park through two floor-to-ceiling bay windows. Seating six guests, the lounge area offers a fireplace and a writing desk. Continue your entertaining in the formal dining room. A private refuge, the master bedroom includes a sun-lit bathroom and spacious walk-in wardrobe.

ROOM DETAILS & FLOORPLAN



Grand One-Bedroom

Terrace

Garden

The Blue

Presidential



## PRESIDENTIAL SUITE

**SIZE**  
 One Bedroom: 195 m<sup>2</sup> (2,098 sq. ft.)  
 Two Bedrooms: 230 m<sup>2</sup> (2,475 sq. ft.)  
 Three Bedrooms: 265 m<sup>2</sup> (2,852 sq. ft.)

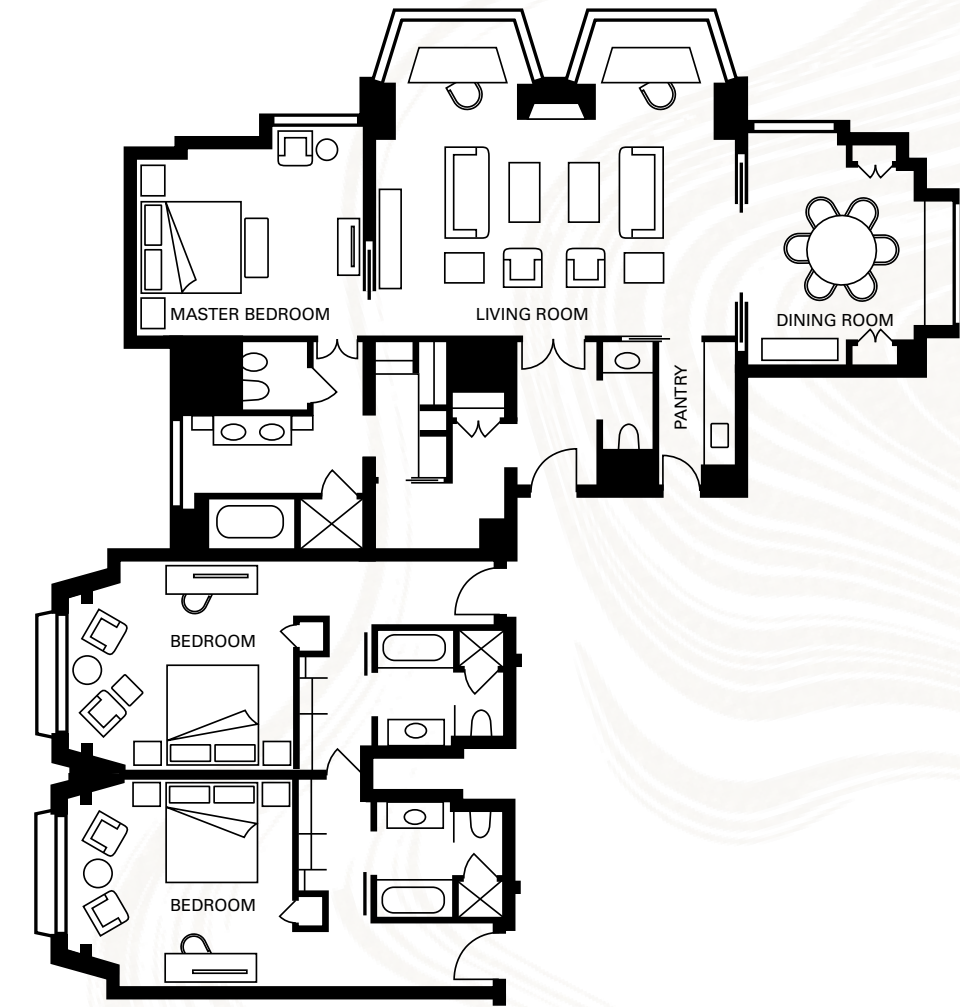
**LOCATION**  
 5th floor

**VIEW**  
 Hyde Park and Park Lane

**MAXIMUM OCCUPANCY**  
 King bed and sofa bed: 3 adults, or 2 adults and 2 children  
 Two king beds and sofa bed: 4 adults, or 4 adults and 2 children  
 Three king beds and sofa bed: 6 adults, or 6 adults and 2 children  
 Crib for child under two

**DÉCOR**  
 Grey colour scheme with rosewood panels and Gaudi stone marble

**HIGHLIGHTS**  
 Living room with two bay windows, writing desk, lounge seating for six, marble fireplace, chaise longue and 50" Loewe TV  
 Corner-view formal dining room seating six, featuring butler's pantry with service entrance  
 Master bedroom with 42" LG TV and window side seating and large dressing room  
 Master bathroom with natural daylight, marble double vanity, mirror with integrated TV, walk-in shower, deep tub and cubicle with WC and bidet  
 Guest powder room



[return to the SUITE OVERVIEW](#)

[learn more on FOURSEASONS.COM](#)





## STANDARD FEATURES

### SERVICES AND AMENITIES

- 24 hour
  - In-Room Dining
  - Laundry / dry-cleaning / pressing
  - Multilingual Concierge
- Twice-daily housekeeping service with evening ice delivery
- One-hour pressing
- Four Seasons Mobile App check-in
- Complimentary overnight shoe shining
- Limousine service
- Currency exchange service
- Safety deposit boxes
- Babysitting service
- Services and amenities for younger guests
- 24-hour on call doctor or nurse
- In-house florist
- Salon services
- Valet parking
- Automatic teller machine

### TECHNOLOGY

- Wireless high-speed internet access
- Complimentary Wi-Fi
- Plasma/LCD screen TV
- Multi-line telephone(s) with conference call capability and voicemail
- PlayStation\*
- Alarm clock radio
- Laptops, printers and fax machines\*
- Adapters and transformers\*

### BED & BATH

- Down duvet and pillow
- Hypoallergenic (non-feather) bedding\*
- Orthopaedic pillow\*
- Lighted make-up/shaving mirror
- Dual-voltage shaving outlet
- Hairdryer
- Thick terry cotton bathrobes

### ROOM FEATURES

- Complimentary newspaper
- Humidifier and air ionizer\*
- In-room safe
- Iron and ironing board\*
- Private bar
- Silk-padded hangers
- Non-smoking rooms

### ACCESSIBILITY

- Wheelchair-equipped rooms
- Visually-impaired kit\*
- Hearing-impaired kit\*
- Flashlights\*

\*Available upon request





## COMPARISON CHART

SUITES	NUMBER	SIZE	FLOOR	OCCUPANCY	VIEW	BEDS	BATHROOMS
Executive Conservatories	8	From 49 m <sup>2</sup> (527 sq. ft.)	2nd floor	3 adults, or 2 adults and 2 children	Urban	One king bed	One full marble bathroom
Westminster Suite	7	63 m <sup>2</sup> (678 sq. ft.)	6th to 9th floor	3 adults, or 2 adults and 1 child	City	One king bed	One full marble bathroom, plus guest powder room
Mayfair Suite	5	56 m <sup>2</sup> (603 sq. ft.)	3rd, 4th, 6th, 7th and 8th floors	2 adults and 1 baby under 2 years of age	Park Lane and Mayfair	One king bed	One full marble bathroom
Ambassador Suite	7	75 m <sup>2</sup> (807 sq. ft.)	3rd to 9th floor	3 adults, or 2 adults and 2 children	Urban	One king bed	One full marble bathroom, plus guest powder room
Deluxe One-Bedroom Suite	3	112 m <sup>2</sup> (1,205 sq. ft.)	6th to 8th floor	3 adults, or 2 adults and 2 children	City	One king bed	One full marble bathroom, plus guest powder room
Park Suite	4	103 m <sup>2</sup> (1,108 sq. ft.)	3rd, 4th, 6th and 7th floors	3 adults, or 2 adults and 2 children	Park Lane and Hyde Park	One king bed	One full marble bathroom, plus guest powder room

## SPECIALTY SUITES

Grand One-Bedroom Suite	3	101 m <sup>2</sup> (1,087 sq. ft.); terrace: 99 m <sup>2</sup> (1,066 sq. ft.)	2nd floor	3 adults, or 2 adults and 2 children	Urban	One king bed	One full marble bathroom, plus guest powder room
Terrace Suite	1	137 m <sup>2</sup> (1,480 sq. ft.)	2nd floor	3 adults, or 2 adults and 2 children	Urban	One king bed	One full marble bathroom, plus guest powder room
Garden Suite	1	128 m <sup>2</sup> (1,378 sq. ft.); terrace: 60 m <sup>2</sup> (646 sq. ft.)	2nd floor	3 adults, or 2 adults and 2 children	Park Lane and Hyde Park	One king bed	One full marble bathroom, plus guest powder room
The Blue Suite	1	103 m <sup>2</sup> (1,109 sq. ft.)	8th floor	3 adults, or 2 adults and 2 children	Hyde Park	One king bed	One full marble bathroom, plus guest powder room
Presidential Suite	1	195 m <sup>2</sup> (2,098 sq. ft.)	5th floor	3 adults, or 2 adults and 2 children,	Park Lane and Hyde Park	One king bed per guest room	One full marble bathroom per bedroom, plus one guest powder room

*learn more on* [FOURSEASONS.COM](https://www.fourseasons.com)



## TOWN, COUNTRY AND CITY EXPERIENCES

Balance your time “in town” at Park Lane with stays at two other Four Seasons hotels in our UK Collection.

### FOUR SEASONS HOTEL HAMPSHIRE

Experience the lush English countryside – just an hour outside central London – with traditional activities ranging from horse riding to clay-pigeon shooting.

### FOUR SEASONS HOTEL LONDON AT TEN TRINITY SQUARE

Discover the City of London and all its nearby museums and attractions. Our hotel is an historic landmark, steps from the Tower of London and the River Thames.

---

*Four Seasons Hotel*  
LONDON AT PARK LANE >

---

*Four Seasons Hotel*  
HAMPSHIRE >

---

*Four Seasons Hotel*  
LONDON AT TEN TRINITY SQUARE >



# BOOK YOUR SUITE STAY

Most of our suites may be booked online at [fourseasons.com](http://fourseasons.com), while our specialty suites are available to book via telephone.

If you have any questions, please contact us:  
T. 44 (20) 7499-0888

Four Seasons Hotel London at Park Lane  
Hamilton Place, Park Lane  
W1J 7DR London, England

*connect with us at*  
[FOURSEASONS.COM/LONDON](http://FOURSEASONS.COM/LONDON)

