



FOUR SEASONS
HOTEL
BOSTON

SUITES *PORTFOLIO*

RESIDENTIAL COMFORT ON THE PUBLIC GARDEN >



FOUR SEASONS HOTEL BOSTON

For guests seeking New England charm in the heart of historic Boston, Four Seasons Hotel Boston is the ultimate home base for exploration and relaxation.



Senator Suite

State Suite

Garden Suite

Presidential Suite

Royal Suite

A SPECTACULAR SETTING IN THE HEART OF AMERICA'S WALKING CITY

Located on floors 3 – 8, each with sweeping views of the Boston Public Garden and city skyline, our 14 luxury suites invite relaxation, tranquility and residential comfort.

[VIEW OUR MODERN SUITES >](#)



[Senator Suite](#)[State Suite](#)[Garden Suite](#)[Presidential Suite](#)[Royal Suite](#)

SENATOR SUITE

A more spacious alternative to the Four Seasons Executive Suites, Senator Suites offer refuge from the bustling city with stunning views of the Boston Public Garden.

<i>Size</i>	825 SQ. FT.
<i>Floors</i>	3RD & 6TH
<i>View</i>	BOSTON PUBLIC GARDEN

[SUITE DETAILS & FLOOR PLAN >](#)

Senator Suite

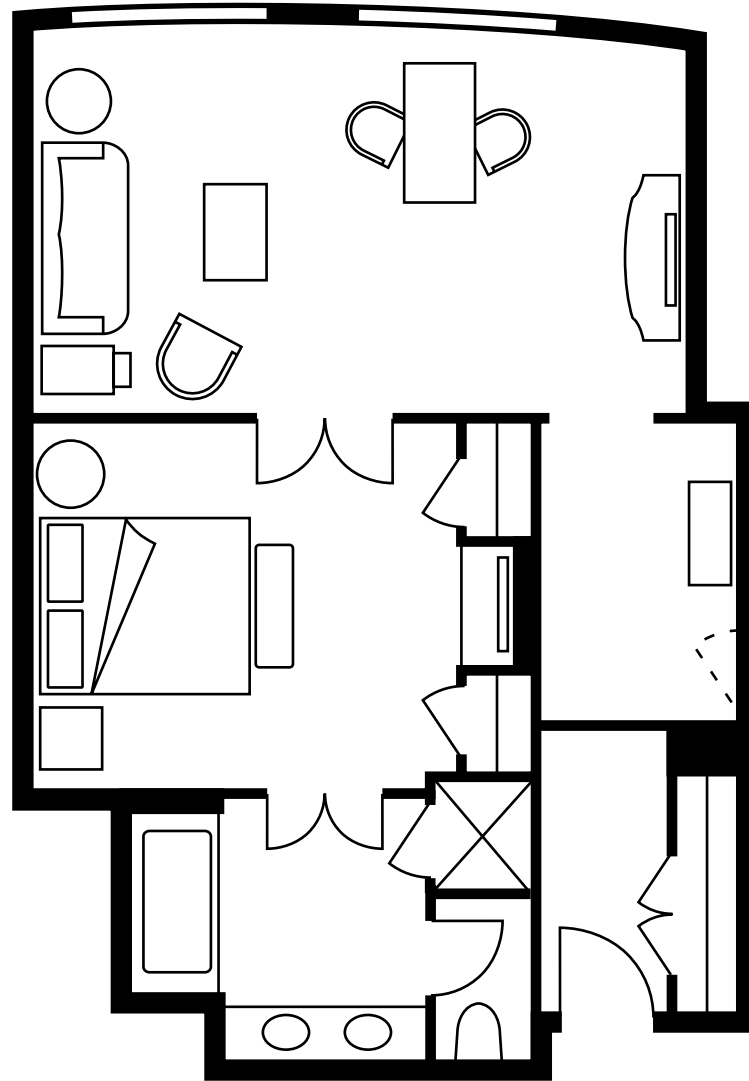
State Suite

Garden Suite

Presidential Suite

Royal Suite

SENATOR SUITE



LOCATION 3rd & 6th floors

VIEW Boston Public Garden

SIZE 825 sq. ft.

EXTRA BED Rollaway or crib

OCCUPANCY 3 adults, or 2 adults and 1 child

BATHROOMS One full marble bathroom with separate shower and bathtub. Some suites feature a second guest powder room

SUITE FEATURES

- Living area with sofa and two large armchairs
- Work desk with comfortable chair and charging station
- French doors separate the master bedroom from the living room, allowing an open flow as well as privacy
- Two 65" TVs



Learn more about our Senator Suite at [FOURSEASONS.COM](https://www.fourseasons.com) >



[Senator Suite](#)[State Suite](#)[Garden Suite](#)[Presidential Suite](#)[Royal Suite](#)

STATE SUITE

With sweeping views of the Boston Common and the gold-domed State House, these one-bedroom suites feature a separate living area to unwind with family or entertain friends.

<i>Size</i>	900 SQ. FT.
<i>Floors</i>	3RD – 8TH (ONE PER FLOOR)
<i>View</i>	BOSTON COMMON AND THE STATE HOUSE

[SUITE DETAILS & FLOOR PLAN >](#)

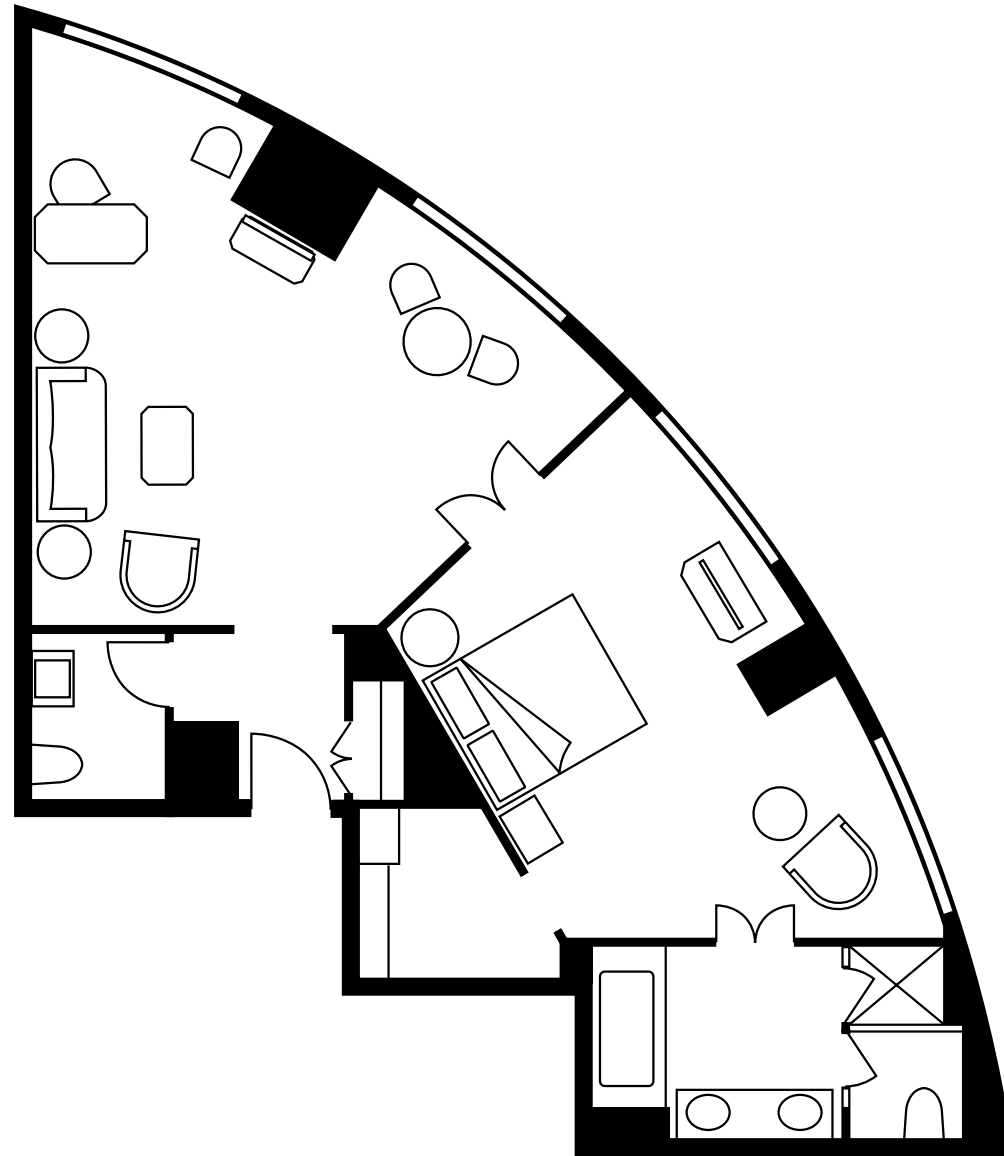


Senator Suite

State Suite

*Garden Suite**Presidential Suite**Royal Suite*

STATE SUITE

**LOCATION**

3rd – 8th floors (one per floor)

VIEW

Boston Common and the State House

SIZE

900 sq. ft.

EXTRA BED

Rollaway or crib

OCCUPANCY

3 adults, or 2 adults and 1 child

BATHROOMS

One full marble bathroom with separate shower and bathtub plus a guest powder room off of the entryway

SUITE FEATURES

May be configured as a Two-Bedroom Suite with the connecting Deluxe City View King Room

Large living area with sofa and two large armchairs

Multipurpose table for working or dining

High-top bar nook

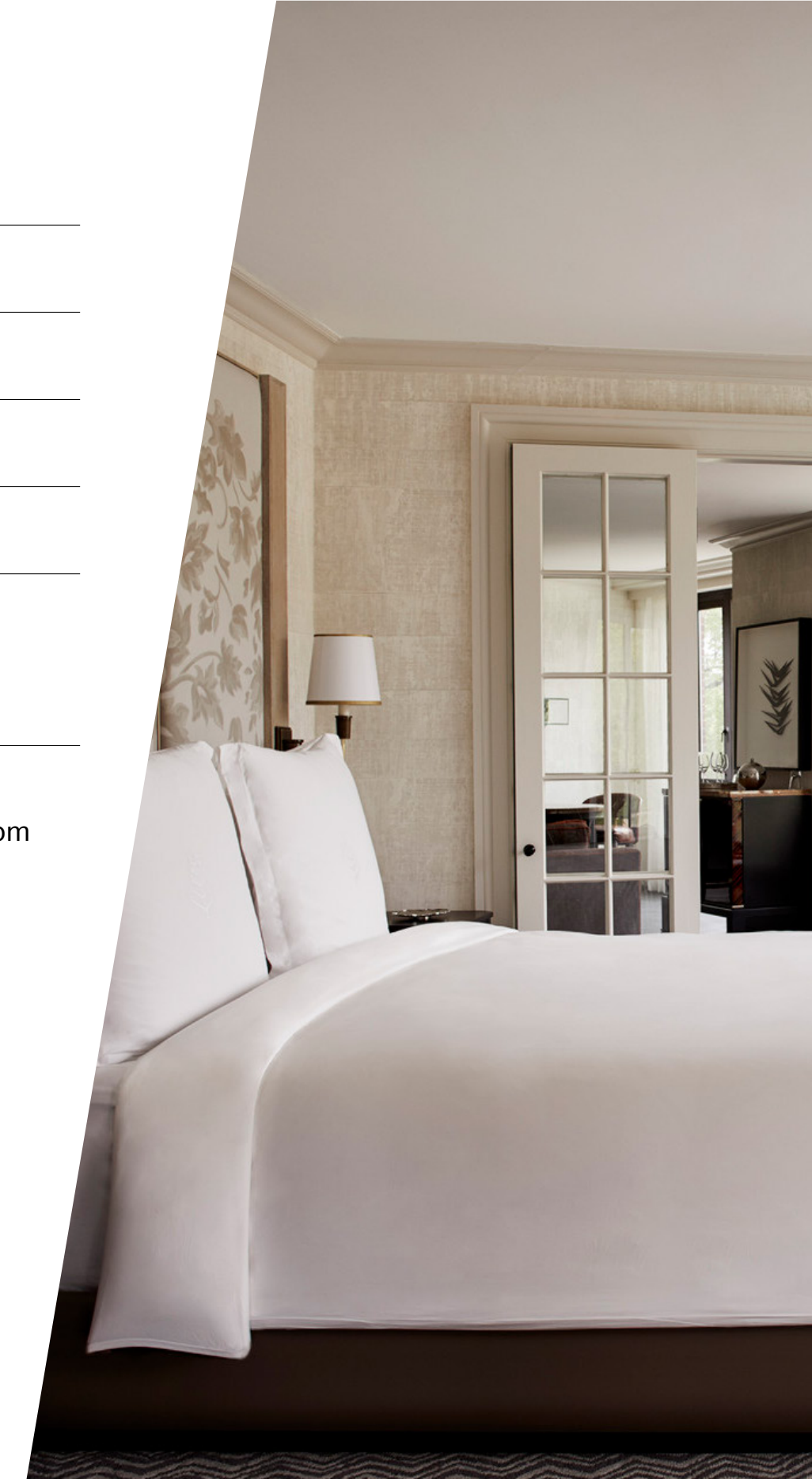
French doors separate the master bedroom from the living room, allowing an open flow as well as privacy

Two 65" TVs

Walk-in closet dressing area

Learn more about our State Suite at

FOURSEASONS.COM >



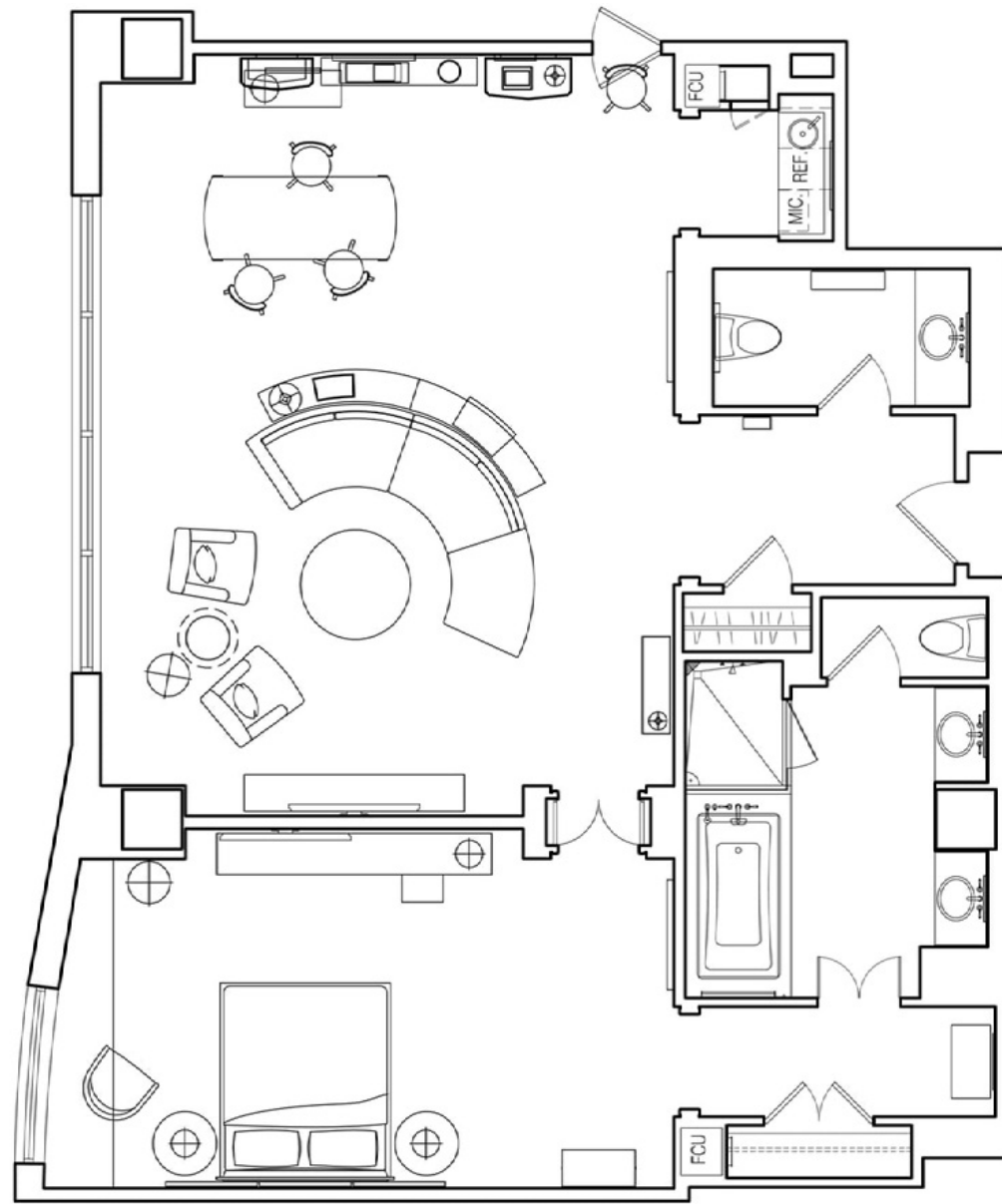
[Senator Suite](#)[State Suite](#)[Garden Suite](#)[Presidential Suite](#)[Royal Suite](#)

GARDEN SUITE

Inspired by the famed Boston Public Garden the sweeping spaces overlook, the Garden Suites offer a calm, earth-toned palette with spacious seating. The artwork selections bridge old Boston with new, refreshing the residentially inspired suite with contemporary sophistication.

<i>Size</i>	1,200 SQ. FT.
<i>Floors</i>	4TH – 6TH
<i>View</i>	BOSTON PUBLIC GARDEN

[SUITE DETAILS & FLOOR PLAN >](#)

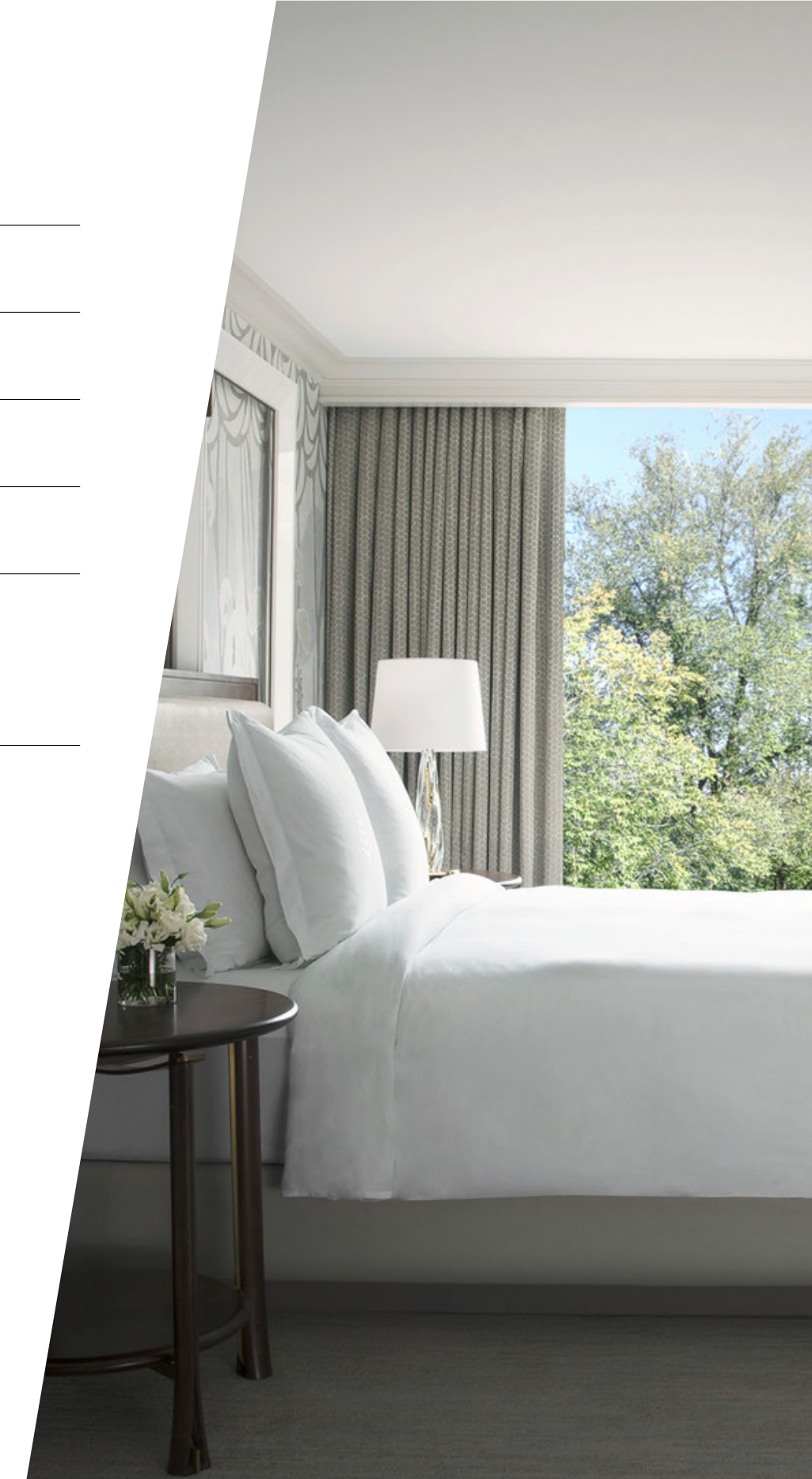
[Senator Suite](#)[State Suite](#)[Garden Suite](#)[Presidential Suite](#)[Royal Suite](#)

GARDEN SUITE

LOCATION	4th – 6th floors
VIEW	Boston Public Garden
SIZE	1,200 sq. ft.
EXTRA BED	Rollaway or crib
OCCUPANCY	3 adults, or 2 adults and 1 child
BATHROOMS	One full marble bathroom with separate shower and bathtub plus a guest powder room off of the entryway
SUITE FEATURES	<p>May be configured as a Two-, Three- or Four-Bedroom Suite with the addition of connecting rooms</p> <p>High-top dining area for four</p> <p>Living area with large sofa and armchair</p> <p>Wet bar with additional sink perfect for entertaining</p> <p>Large living area with sofabed and two large armchairs</p> <p>Two 65" TVs</p>

Learn more about our Garden Suite at

FOURSEASONS.COM >



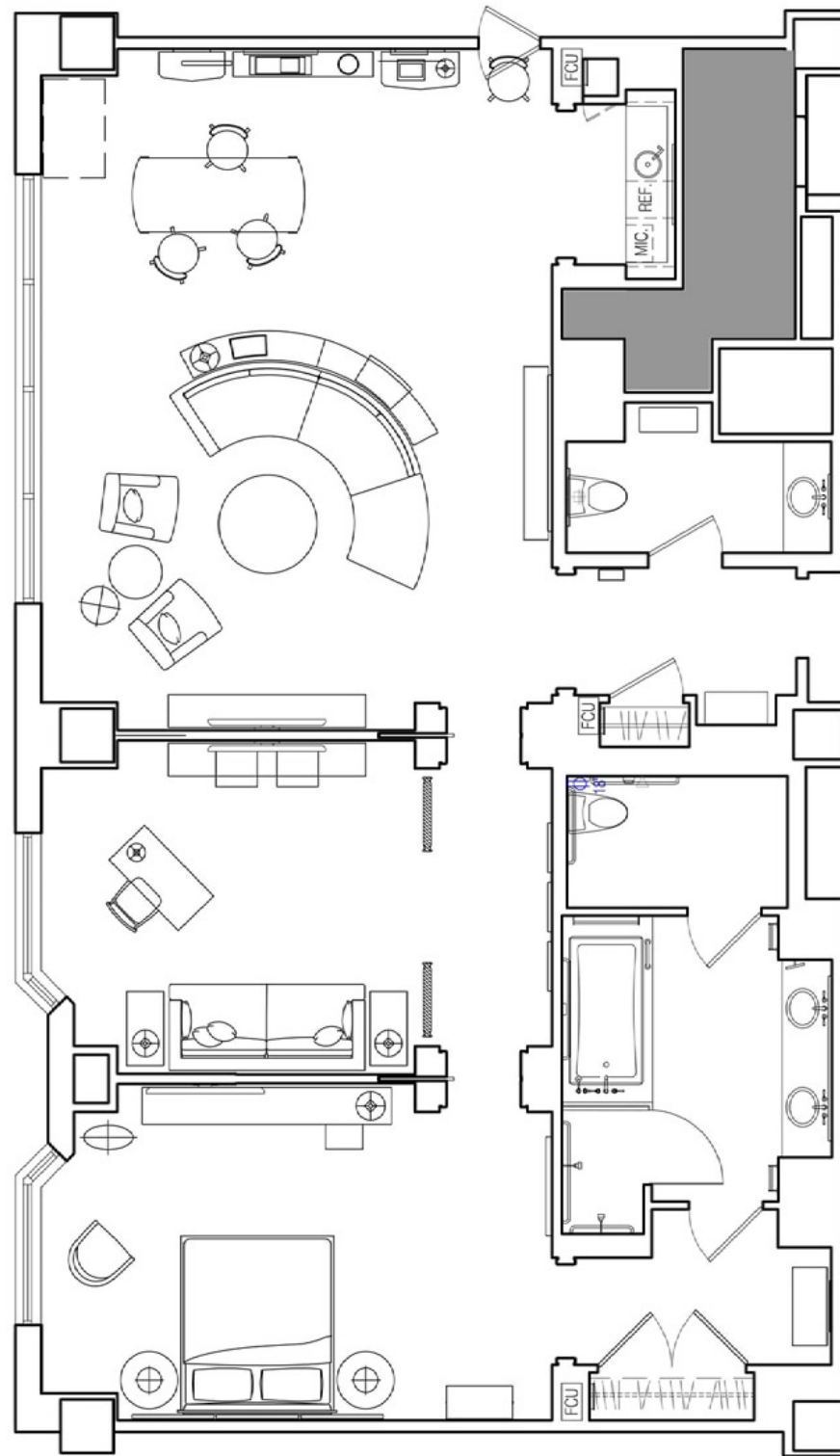
[Senator Suite](#)[State Suite](#)[Garden Suite](#)[Presidential Suite](#)[Royal Suite](#)

PRESIDENTIAL SUITE

Overlooking the Public Garden, this spectacular suite features an updated New England design with the feel of a bespoke Boston townhouse.

<i>Size</i>	1,700 SQ. FT.
<i>Floor</i>	4TH
<i>View</i>	BOSTON PUBLIC GARDEN

[SUITE DETAILS & FLOOR PLAN >](#)

*Senator Suite**State Suite**Garden Suite**Presidential Suite**Royal Suite*

PRESIDENTIAL SUITE

LOCATION	4th floor
VIEW	Boston Public Garden
SIZE	1,700 sq. ft.
EXTRA BED	Rollaway or crib
OCCUPANCY	3 adults, or 2 adults and 1 child
BATHROOMS	One full marble bathroom with separate shower and bathtub plus a guest powder room off of the entryway
SUITE FEATURES	<p>May be configured as a Two-Bedroom Suite with the connecting Deluxe Garden View King Room</p> <p>High-top dining area for four</p> <p>Living area with large sofa and armchair</p> <p>Wet bar with additional sink perfect for entertaining</p> <p>Full media room with couch and working desk</p> <p>Large living area with sofa and two large armchairs</p> <p>Three 65" TVs</p>

Learn more about our Presidential Suite at

FOURSEASONS.COM >



[Senator Suite](#)[State Suite](#)[Garden Suite](#)[Presidential Suite](#)[Royal Suite](#)

ROYAL SUITE

Feel like you've stepped into your very own Boston Brownstone with our expansive sixth-floor Royal Suite. With step-out views of the Public Garden, this suite offers residential living at its finest, including a dining room seating eight, media room, service kitchen and baby grand piano. The Sanctuary outdoor terrace is steps away for al fresco dining or morning coffee.

<i>Size</i>	2,590 SQ. FT.
<i>Floor</i>	6TH
<i>View</i>	BOSTON PUBLIC GARDEN

[SUITE DETAILS & FLOOR PLAN >](#)

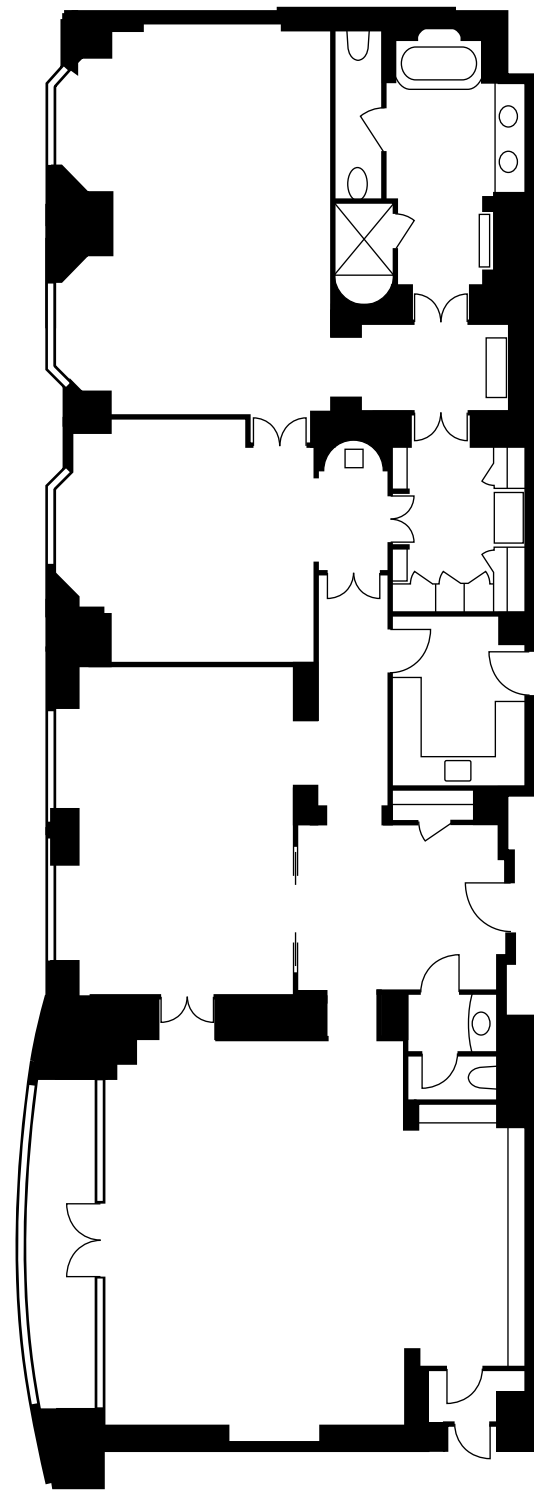
Senator Suite

State Suite

Garden Suite

Presidential Suite

Royal Suite



ROYAL SUITE

LOCATION	6th floor
VIEW	Boston Public Garden
SIZE	2,590 sq. ft.
EXTRA BED	Rollaway or crib
OCCUPANCY	3 adults, or 2 adults and 1 child
BATHROOMS	One full marble bathroom with separate shower and bathtub, plus guest powder room
SUITE FEATURES	<p>May be configured as a Two-Bedroom Suite with the connecting Deluxe Garden View King Room</p> <p>Surround sound entertainment system</p> <p>Dining room seating 8</p> <p>Service kitchen</p> <p>Private balcony overlooking the Boston Public Garden</p> <p>Baby grand piano</p> <p>Media room</p>

Learn more about our Royal Suite at

FOURSEASONS.COM >





FLOOR 4

- DELUXE KING ROOM
- STATE SUITE
- SUPERIOR KING ROOM
- GARDEN SUITE
- GARDEN VIEW KING ROOM
- DELUXE DOUBLE ROOM
- ACCESSIBLE DELUXE KING ROOM
- PRESIDENTIAL SUITE
- FOUR SEASONS EXECUTIVE SUITE GARDEN VIEW
- GARDEN VIEW DOUBLE ROOM
- FOUR SEASONS EXECUTIVE SUITE CITY VIEW
- ◀▶
 CONNECTING ROOMS

FULL FLOOR & SUITE BUYOUTS

Ask about connecting rooms or suites for additional space. We're always happy to personalize your Four Seasons Hotel Boston experience.

Price upon request



DISCOVER FOUR SEASONS HOTEL BOSTON

CONNECT WITH US AT:
fourseasons.com/boston



Four Seasons Hotel Boston
200 Boylston St,
Boston, MA 02116
Tel. 1 (617) 338-4400

Updated: 03/2023

