



FOUR SEASONS
HOTEL
ATLANTA





HOTEL OVERVIEW

SUITES

AMENITIES

MAP

CONTACT US

AN INVITING RESIDENTIAL-STYLE RETREAT

Soaring above Midtown, Atlanta's most dynamic neighborhood, Four Seasons Atlanta seamlessly blends timeless glamour with the genuine warmth of Southern hospitality. We provide an elevated sanctuary to experience the city's diverse culinary scene, iconic cultural landmarks and inviting outdoor greenspaces. Whether visiting for a weekend getaway or a long-term stay, our suites are thoughtfully detailed to ensure relaxation and privacy.



[Learn more at *fourseasons.com*](https://www.fourseasons.com)



HOTEL OVERVIEW

SUITES

AMENITIES

MAP

CONTACT US



TERRACE SUITE

Perched just above the treetops on the fifth floor, guests will find the largest private hotel terraces in the city, providing expansive views of Midtown's treelined streets and surrounding architectural sights. These well-appointed suites present a cozy guest room with residential-style conveniences of a wingback lounge chair and small round table, while the fully furnished outdoor living space comfortably seats nine guests on a large lounge sofa and dining table for four.

 [View floor plan](#)

TERRACE SUITE

ONE-BEDROOM SUITE

MIDTOWN SUITE

CORNER SUITE

LUXURY SUITE

PRESIDENTIAL SUITE

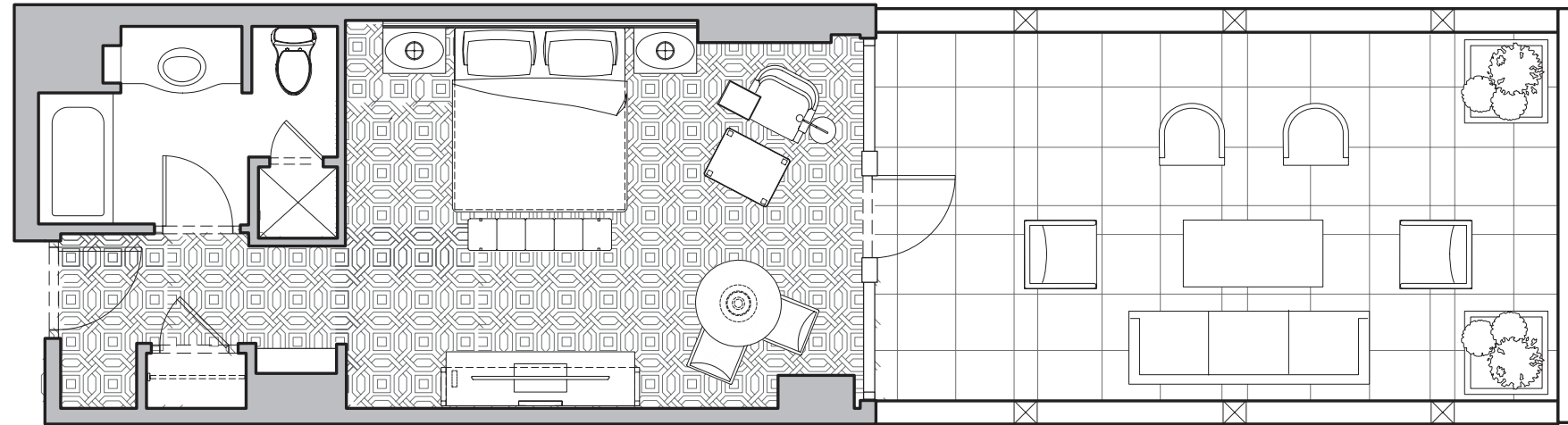
HOTEL OVERVIEW

SUITES

AMENITIES

MAP

CONTACT US



TERRACE SUITE

LOCATION

Exclusive to the 5th floor

VIEWS

Midtown Atlanta's skyline

SIZE

450-sq.-ft. (42-m²) interior /
260-sq.-ft. (24-m²) exterior

BED

King bed

EXTRA BED

No

OCCUPANCY

Sleeping capacity for two in one king-size bed. Outdoor space includes seating for nine guests on a lounge sofa and dining table for four.

BATHROOM

1 full bath

SUITE FEATURES

Private 260-sq.-ft. (24-m²) outdoor terrace overlooking Midtown

Outdoor living area with sofa seating, dining table for four and lighting

Customizable Four Seasons bed – with your choice of mattress topper

Indoor living area with small round table for two and wingback chair with footrest

Bedside charging stations

Full-length mirror

Laptop-sized in-room safe

Bose speaker with Bluetooth connectivity

65-inch flat screen television

 [Learn more about our Terrace Suite](#)

TERRACE SUITE

ONE-BEDROOM SUITE

MIDTOWN SUITE

CORNER SUITE

LUXURY SUITE

PRESIDENTIAL SUITE

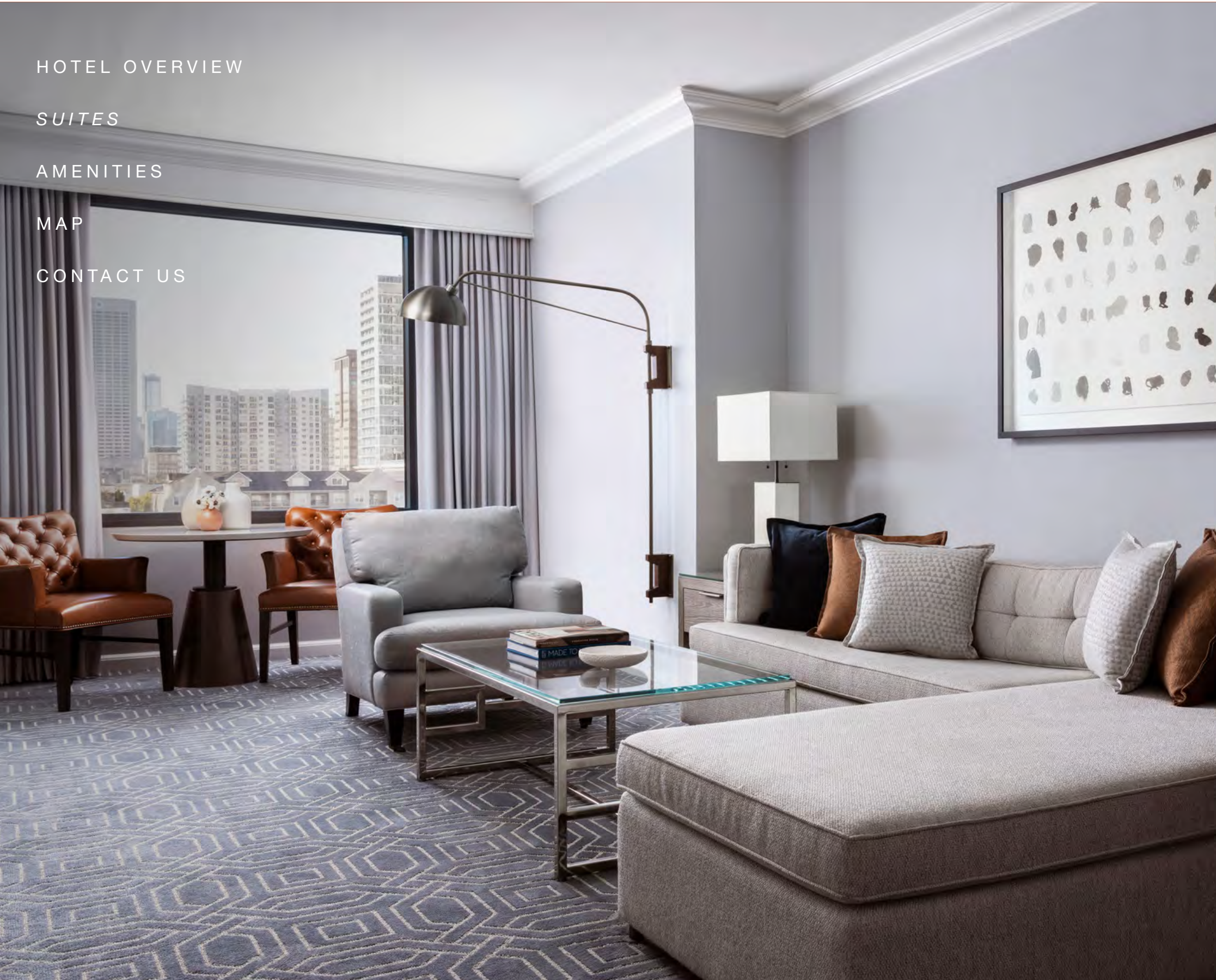
HOTEL OVERVIEW

SUITES

AMENITIES

MAP

CONTACT US



ONE-BEDROOM SUITE

Natural daylight fills the L-shaped One-Bedroom Suites from four expansive, south-facing windows overlooking Midtown's architectural skyline. Designed in a soothing color palette of blues, grays and warm whites, these versatile suites offer a convenient layout with a large, stylish living room. The king bedroom, separated from the living area by a closing door, includes a full master bath outfitted with a glass-enclosed shower and separate bathtub. The living room is furnished with a convertible sofa bed, small table for two, additional half-bath and coat closet, as well as a provisioned wet bar with a discreet, built-in microwave.

 [View floor plan](#)

TERRACE SUITE

ONE-BEDROOM SUITE

MIDTOWN SUITE

CORNER SUITE

LUXURY SUITE

PRESIDENTIAL SUITE

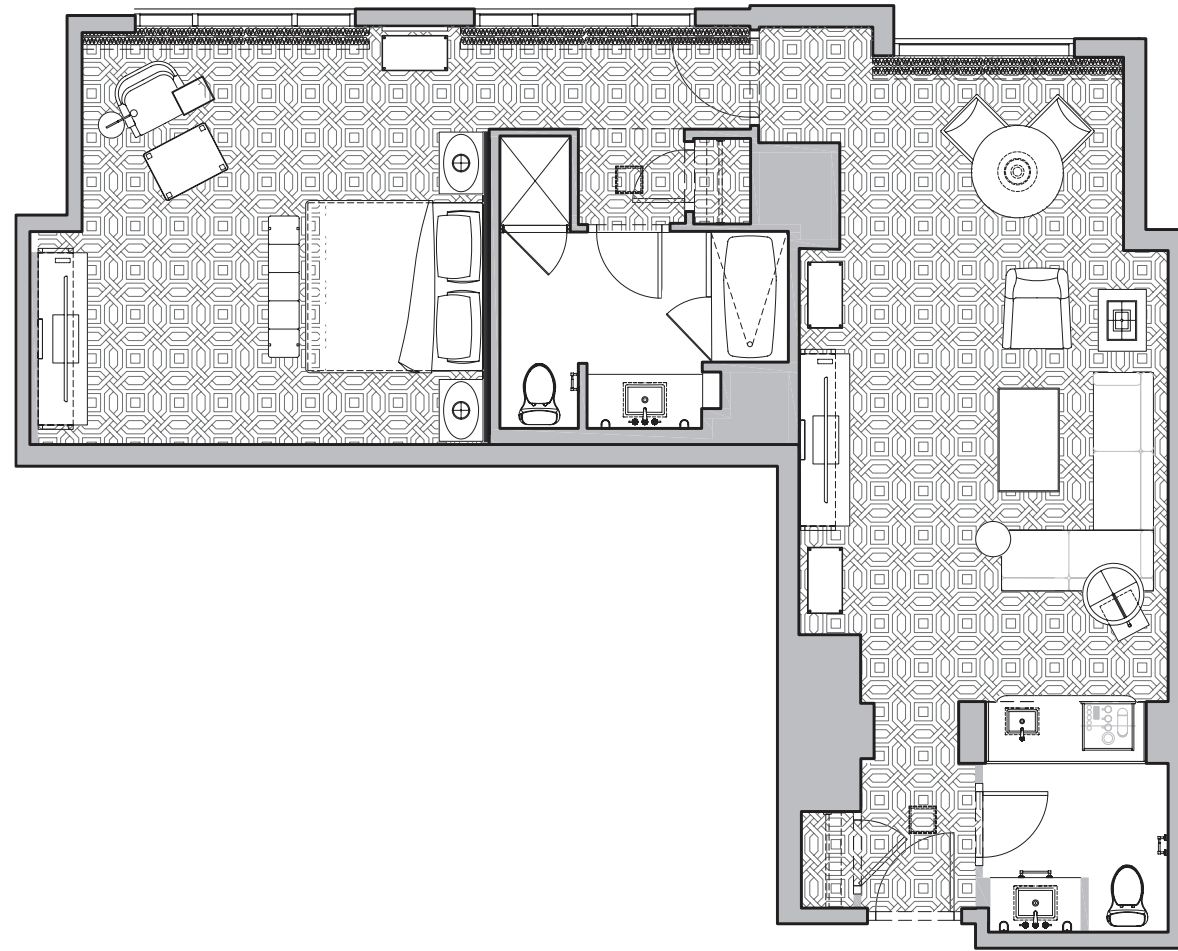
HOTEL OVERVIEW

SUITES

AMENITIES

MAP

CONTACT US



FOUR SEASONS HOTEL ATLANTA
ONE BEDROOM SUITE

ONE-BEDROOM SUITE

LOCATION

6th to 12th floors

VIEWS

Midtown Atlanta

SIZE

950-sq.-ft. (88 m²)

BED

King bed

EXTRA BED

Sofabed, or one rollaway and one crib

OCCUPANCY

3 adults, or 2 adults and 2 children

BATHROOM

One full marble bathroom,
plus guest powder room

SUITE FEATURES

- Private wet bar
- Living area with seating for four
- Small round table for two
- Convertible sofabed
- Beside charging stations
- Two 65-inch flat screen televisions
- Full-length mirror
- Laptop-sized in-room safe
- Bose speaker with Bluetooth connectivity

 [Learn more about our One-Bedroom Suite](#)



TERRACE SUITE

ONE-BEDROOM SUITE

MIDTOWN SUITE

CORNER SUITE

LUXURY SUITE

PRESIDENTIAL SUITE

HOTEL OVERVIEW

SUITES

AMENITIES

MAP

CONTACT US



MIDTOWN SUITE

Set your sights on Midtown's city lights from our Midtown Suite, situated on floors 14 to 19. Designed in a contemporary charcoal palette with navy and burnt orange color accents, the living room includes a small round table with seating for two, a velvet-tufted sofa and plush armchair to comfortably seat six, a half-bath, entertainment credenza and curated wet bar. The king bedroom, which is separated from the living area by a closing door, is lined with vast picture-frame windows and furnished with a wingback lounge and footrest, a second television, a spacious wardrobe and a private ensuite bathroom with large glass-enclosed shower.

 [View floor plan](#)

TERRACE SUITE

ONE-BEDROOM SUITE

MIDTOWN SUITE

CORNER SUITE

LUXURY SUITE

PRESIDENTIAL SUITE

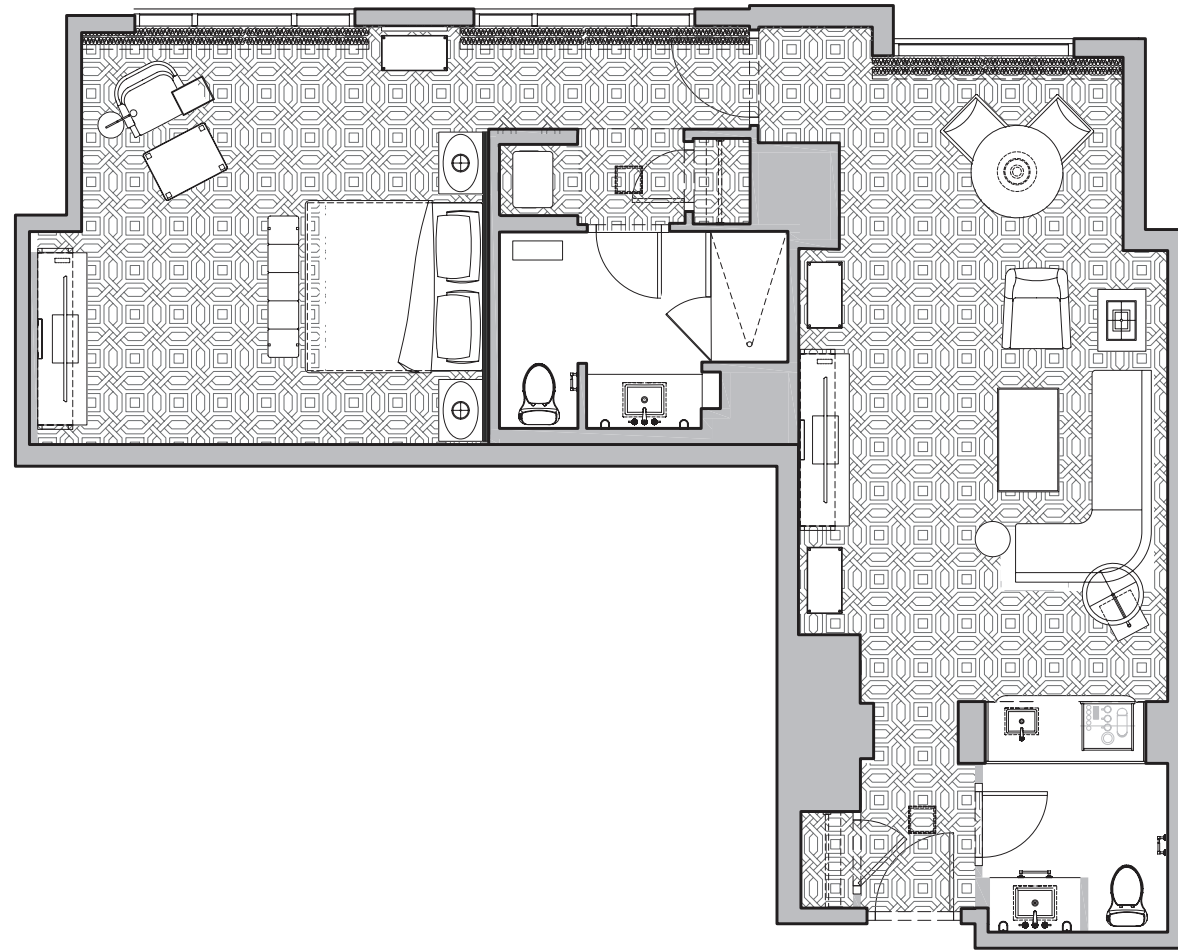
HOTEL OVERVIEW

SUITES

AMENITIES

MAP

CONTACT US



FOUR SEASONS HOTEL ATLANTA
MIDTOWN SUITE

MIDTOWN SUITE

LOCATION

14th to 19th floors

VIEWS

Midtown, south

SIZE

950-sq.-ft. (88 m²)

Two-Bedroom Suite Option:

1,400-sq.-ft. (130 m²) with the addition of the interconnecting Midtown Premier King Room or interconnecting Premier Double Room

BED

King bed

EXTRA BED

One rollaway or one crib (by request)

OCCUPANCY

3 adults, or 2 adults and 1 child

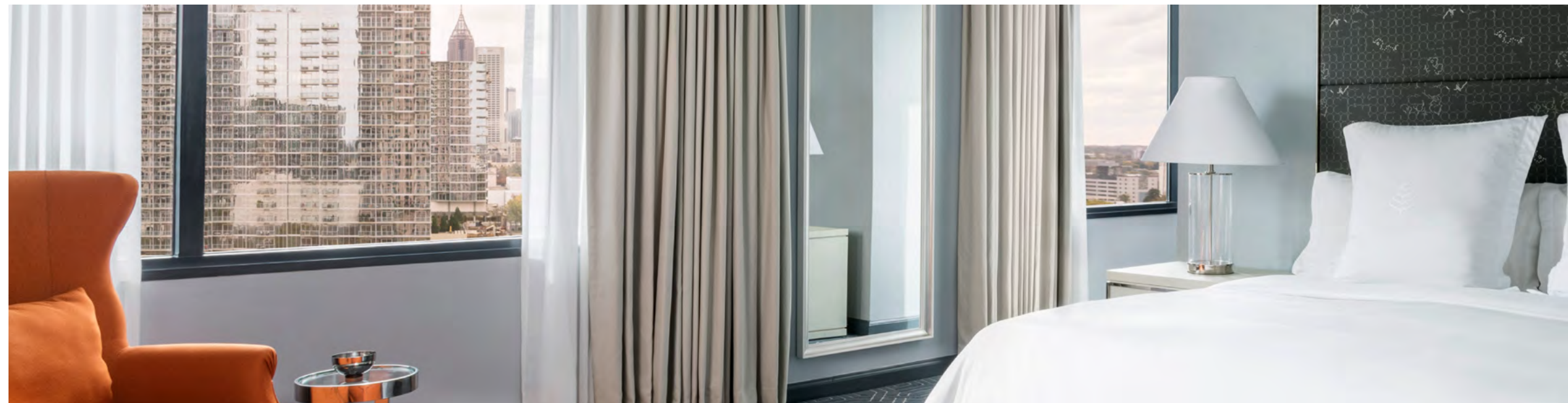
BATHROOM

One full marble bathroom, plus guest powder room

SUITE FEATURES

- Private wet bar
- Living area with seating for four
- Small round table for two
- Bedside charging stations
- Two 65-inch flat screen televisions
- Full-length mirror
- Laptop-sized in-room safe
- Bose speaker with Bluetooth connectivity

 [Learn more about our Midtown Suite](#)



TERRACE SUITE

ONE-BEDROOM SUITE

MIDTOWN SUITE

CORNER SUITE

LUXURY SUITE

PRESIDENTIAL SUITE

HOTEL OVERVIEW

SUITES

AMENITIES

MAP

CONTACT US



CORNER SUITE

Timeless interiors meet architectural skyline views from the vast windows of our Corner Suite. Tucked away in the quiet corners of the Hotel's highest floor, the two Corner Suites exude a timeless aesthetic in hues of blues, grays and whites, softly illuminated by natural sunlight. The living room is furnished with a Lawson sofa and plush armchair to seat four, a small round table for two, entertainment credenza, spacious closet and its own full bathroom with glass-enclosed shower. Separated by a closing door, the exterior walls of the king bedroom feature picture-frame and casement windows, and furnishings include a chaise longue, spacious wardrobe, and secluded working desk with inset window nook to privately observe the city from 19 stories high. An opulent ensuite bathroom includes a glass-enclosed shower and separate bathtub.

 [View floor plan](#)

TERRACE SUITE

ONE-BEDROOM SUITE

MIDTOWN SUITE

CORNER SUITE

LUXURY SUITE

PRESIDENTIAL SUITE

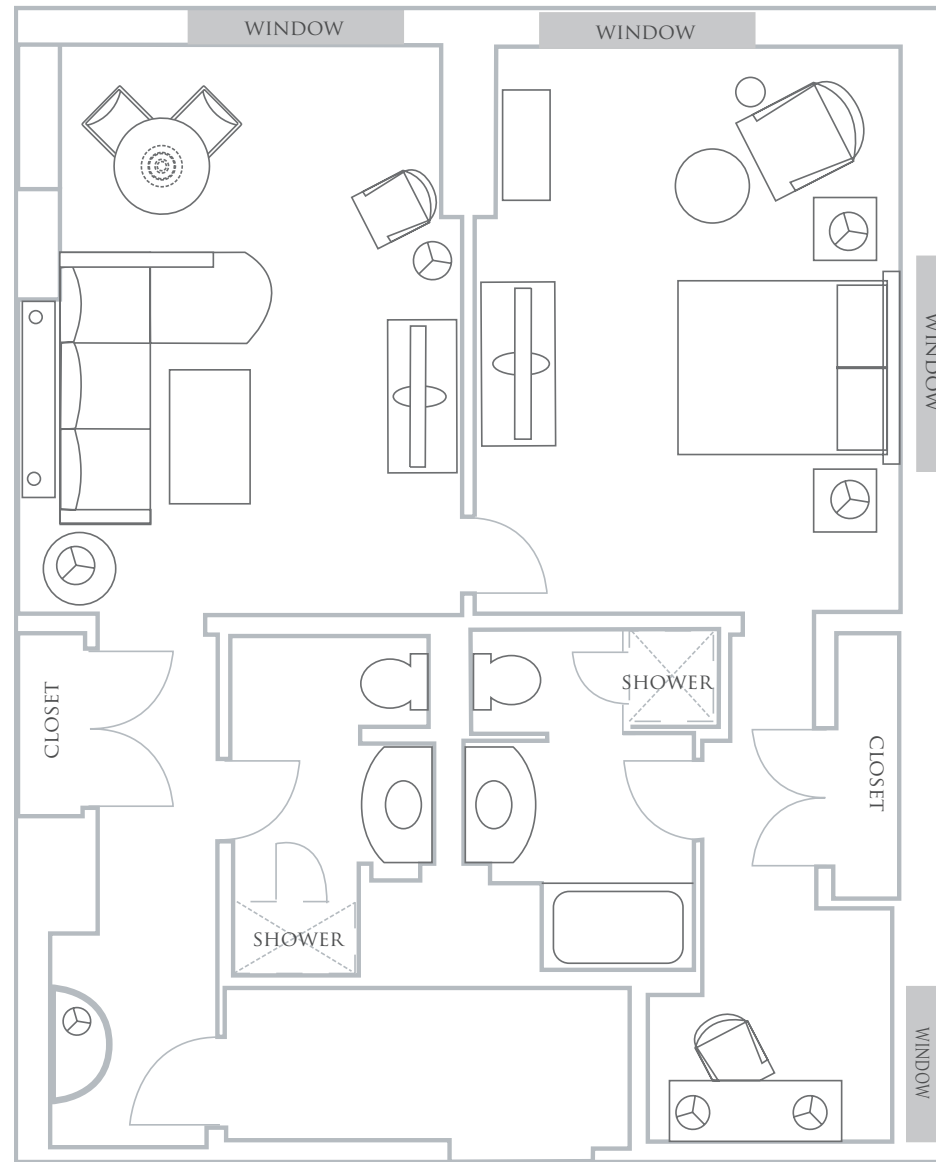
HOTEL OVERVIEW

SUITES

AMENITIES

MAP

CONTACT US



FOUR SEASONS HOTEL ATLANTA
CORNER SUITE

CORNER SUITE

LOCATION

19th floor

VIEWS

Panoramic views of downtown and Midtown Atlanta

SIZE

900-sq.-ft. (84 m²)

BED

King bed

EXTRA BED

Two rollaways, or one rollaway and one crib

OCCUPANCY

3 adults, or 2 adults and 2 children

BATHROOM

Two full marble bathrooms

SUITE FEATURES

Working desk with inset window nook

Chaise longue

Operable windows

Living area with seating for four

Small round table for two

Convertible sofa bed

Bedside charging stations

Two 65-inch flat screen televisions

Full-length mirror

Laptop-sized in-room safe

Bose speaker with Bluetooth connectivity

 [Learn more about our Corner Suite](#)

TERRACE SUITE

ONE-BEDROOM SUITE

MIDTOWN SUITE

CORNER SUITE

LUXURY SUITE

PRESIDENTIAL SUITE

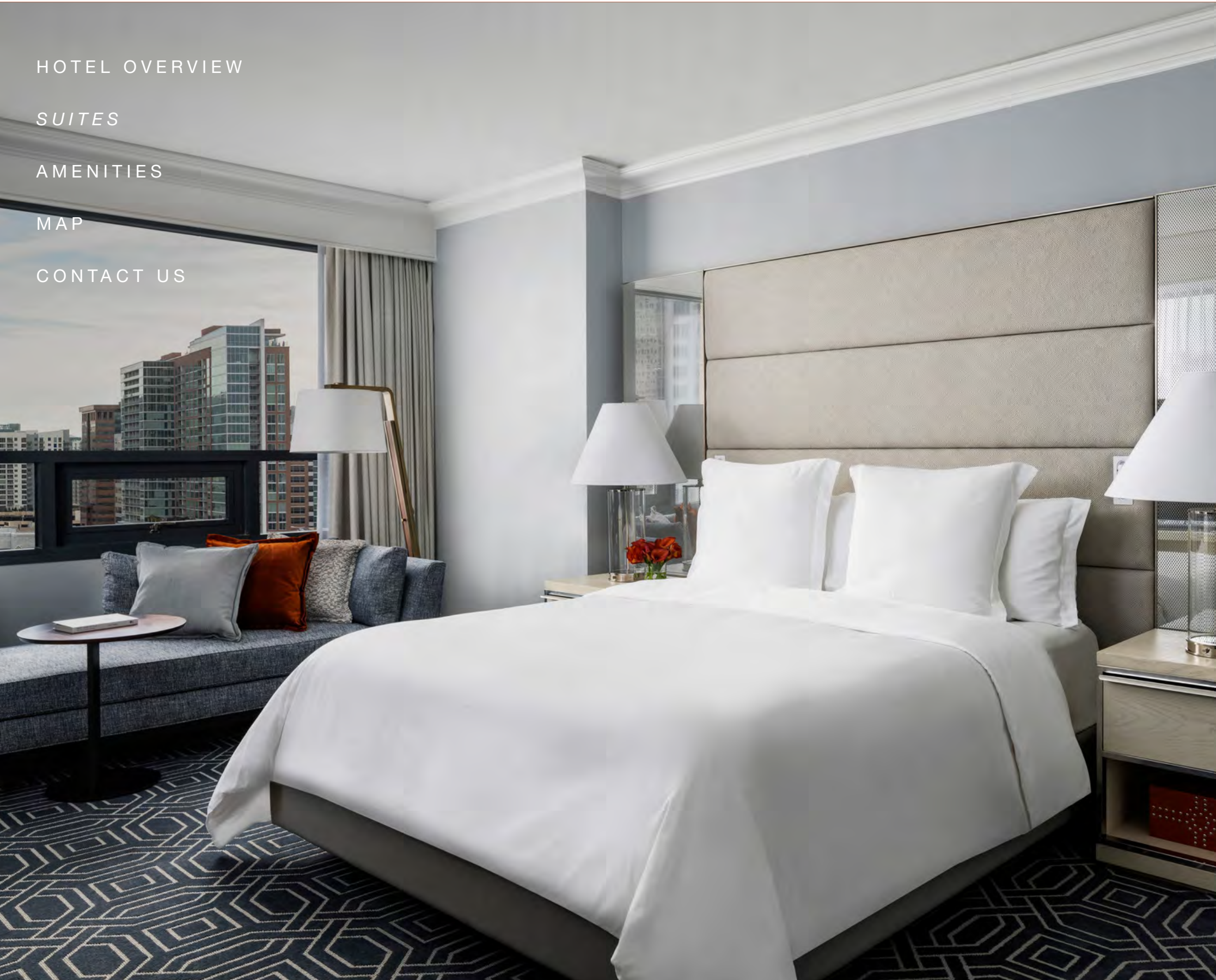
HOTEL OVERVIEW

SUITES

AMENITIES

MAP

CONTACT US



LUXURY SUITE

The 1,100-sq.-ft. Luxury Suites are located exclusively on our 19th floor and offer panoramic views of downtown and Midtown Atlanta. The spacious living room features a sitting area with a convertible sofa bed, small round table with seating for two, half-bath and coat closet. Surrounded by vast picture-frame and casement windows, the separate master bedroom includes residential-style comforts of a chaise longue, a mirrored French-door closet, and an opulent ensuite bathroom with a glass-enclosed shower, double vanity and stand-alone soaking tub, set alongside a dramatic marble statement wall and inset window nook overlooking the city skyline.

 [View floor plan](#)

TERRACE SUITE

ONE-BEDROOM SUITE

MIDTOWN SUITE

CORNER SUITE

LUXURY SUITE

PRESIDENTIAL SUITE

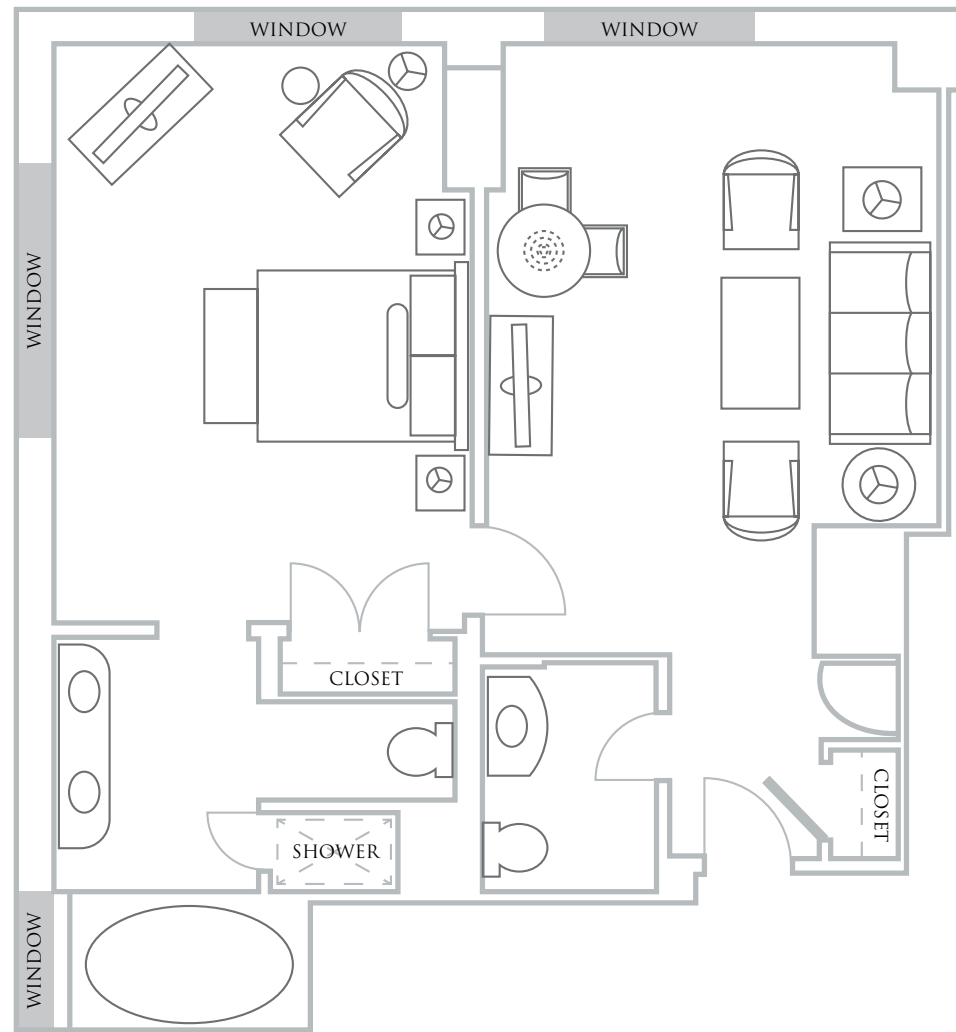
HOTEL OVERVIEW

SUITES

AMENITIES

MAP

CONTACT US



FOUR SEASONS HOTEL ATLANTA
LUXURY SUITE

LUXURY SUITE

LOCATION

19th floor

VIEWS

Panoramic

SIZE

1,100-sq.-ft. (92 m²)

Two-Bedroom Suite Option:

1,600-sq.-ft. (149 m²) with the addition of the interconnecting Midtown Premier King Room

BED

King bed

EXTRA BED

One convertible sofa bed

OCCUPANCY

3 adults, or 2 adults and 2 children

BATHROOM

One full marble bathroom, plus guest powder room

SUITE FEATURES

- Deep soaking tub
- Living area with seating for four
- Operable windows
- Small round table for two
- Convertible sofa bed
- Bedside charging stations
- Two 65-inch flat screen televisions
- Full-length mirror
- Laptop-sized in-room safe
- Bose speaker with Bluetooth connectivity

 [Learn more about our Luxury Suite](#)

TERRACE SUITE

ONE-BEDROOM SUITE

MIDTOWN SUITE

CORNER SUITE

LUXURY SUITE

PRESIDENTIAL SUITE

HOTEL OVERVIEW

SUITES

AMENITIES

MAP

CONTACT US



PRESIDENTIAL SUITE

The architectural details of our Presidential Suite make an instant impact on arrival. Enter through double doors and step into a stylish foyer, before unveiling a spacious living room with writing desk and sectional Lawson sofa centered in front of a monumental arched window. Like a spectacular private residence, this suite includes a full kitchen with separate service entry door from the exterior corridor, a bar with seating for two and an eight-person dining table. Retreat to the primary bedroom quarters through French doors, where a separate foyer leads to the arched doorway of the private bedroom, walk-in closet and opulent ensuite bathroom. The bedroom is furnished with a four-poster king bed, Lawson sofa for two, writing desk with tufted leather armchair, and a Peloton bike beside a casement window. A residential-style walk-in closet features open cabinets with soft illuminating lights and full-length mirror, while the six-fixture ensuite bathroom is equipped with two detached vanities, a bidet and an oversized glass-enclosed shower and stand-alone soaking tub.

 [View floor plan](#)

TERRACE SUITE

ONE-BEDROOM SUITE

MIDTOWN SUITE

CORNER SUITE

LUXURY SUITE

PRESIDENTIAL SUITE

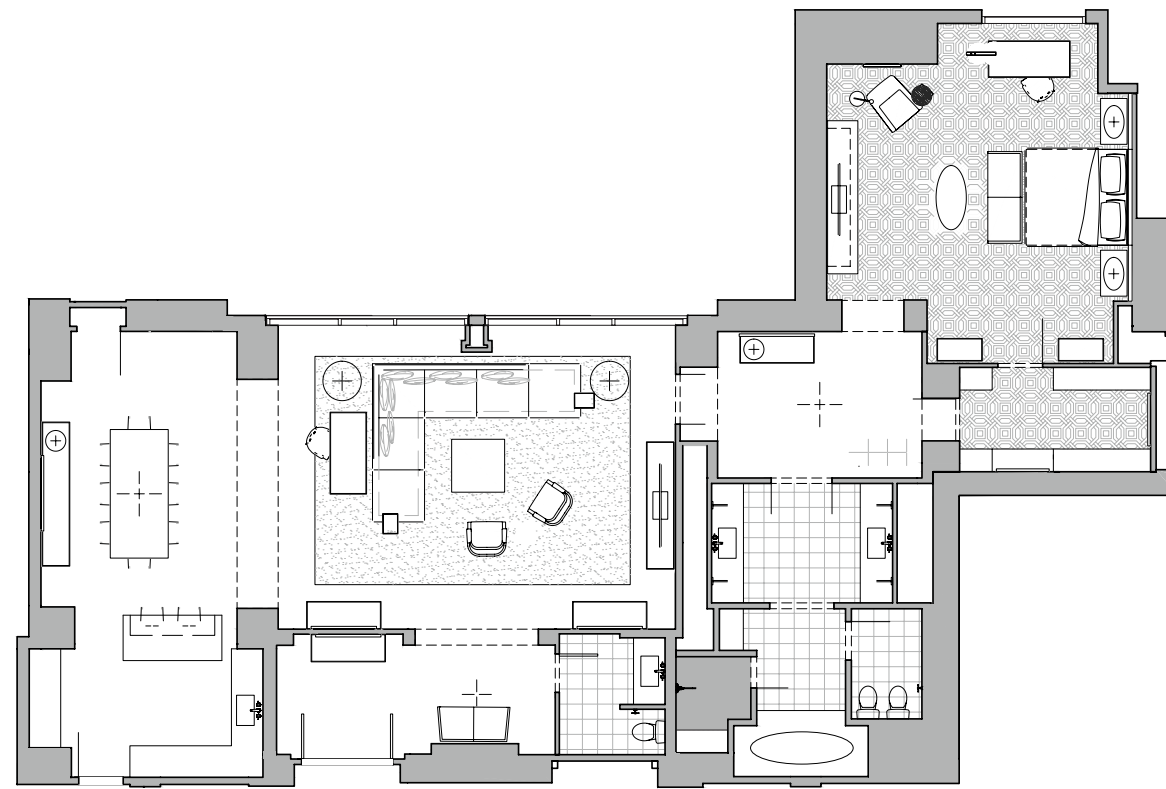
HOTEL OVERVIEW

SUITES

AMENITIES

MAP

CONTACT US



FOUR SEASONS HOTEL ATLANTA
PRESIDENTIAL SUITE

PRESIDENTIAL SUITE

LOCATION

19th floor

VIEWS

Midtown, north

SIZE

2,200-sq.-ft. (204 m²)

Two-Bedroom Suite Option:

2,650-sq.-ft. (246 m²) with the addition of the interconnecting Midtown Premier King Room

Three-Bedroom Suite Option:

3,550-sq.-ft. (330 m²) with the addition of the interconnecting Midtown Premier King Room and outer connecting Corner Suite

BED

King bed

EXTRA BED

Can accommodate two rollaways, or one rollaway and one crib

OCCUPANCY

3 adults, or 2 adults and 2 children

BATHROOM

One full bathroom, plus guest powder room

SUITE FEATURES

Full kitchen

Deep soaking tub

Living area with seating for eight

Operable windows

Dining table for eight

Peloton and free weights

Walk-in closet

Bedside charging stations

Two 65-inch flat screen televisions

Full-length mirror

Laptop-sized in-room safe

Bose speaker with Bluetooth connectivity

 [Learn more about our Presidential Suite](#)



TERRACE SUITE

ONE-BEDROOM SUITE

MIDTOWN SUITE

CORNER SUITE

LUXURY SUITE

PRESIDENTIAL SUITE

HOTEL OVERVIEW

SUITES

AMENITIES

MAP

CONTACT US



AMENITIES

Southern charm, personalized service and modern elegance permeate the Neoclassical-style Hotel. Beneath the 500-crystal chandelier that glistens over our dual-sided grand staircase, guests are invited to explore our resort-style amenities: an intimate spa with 10 treatment rooms, cedar wood sauna and steam room; fitness center with state-of-the-art equipment; two critically acclaimed restaurants; and a marble natatorium bathed in natural sunlight with a 62-foot heated swimming pool and whirlpool adorned with rattan daybeds, lush greenery and an outdoor terrace to revel in the warm sunshine.



[View our amenities](#)



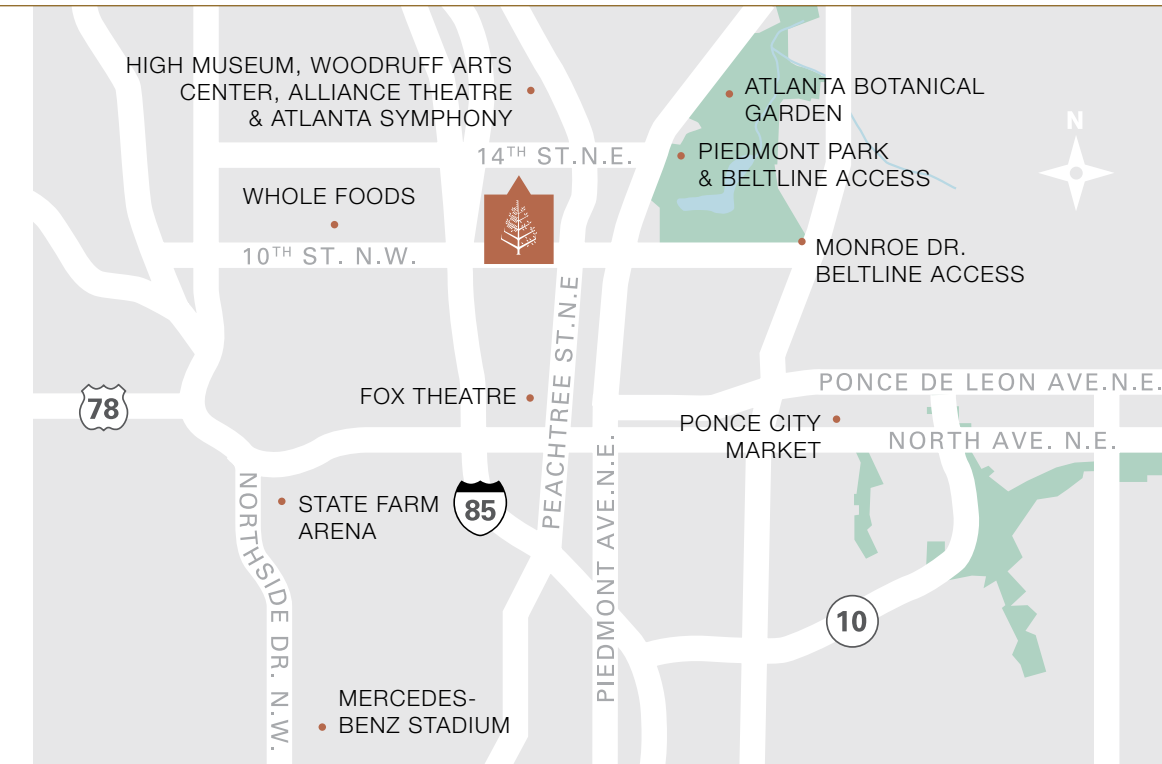
HOTEL OVERVIEW

SUITES

AMENITIES

MAP

CONTACT US



MIDTOWN MAP

Guests of Four Seasons Hotel Atlanta are steps from some of the city's most celebrated sights in the city's most walkable neighborhood. A leisurely stroll beneath canopies of tree-lined streets leads guests to Piedmont Park's 180 acres of vast open-air greenspace and trails, the vibrant flora and fauna of the Atlanta Botanical Garden, a connection point on the interconnecting BeltLine, the Fox Theatre and the Woodruff Arts Center, home to the acclaimed High Museum of Art, Atlanta Symphony Orchestra and Alliance Theatre. Meanwhile, a brief drive in our courtesy house car provides nearby drop-offs to the Georgia Aquarium, National Center for Civil and Human Rights, Mercedes-Benz Stadium, State Farm Arena, Truist Park and more.

 [View our nearby locations](#)

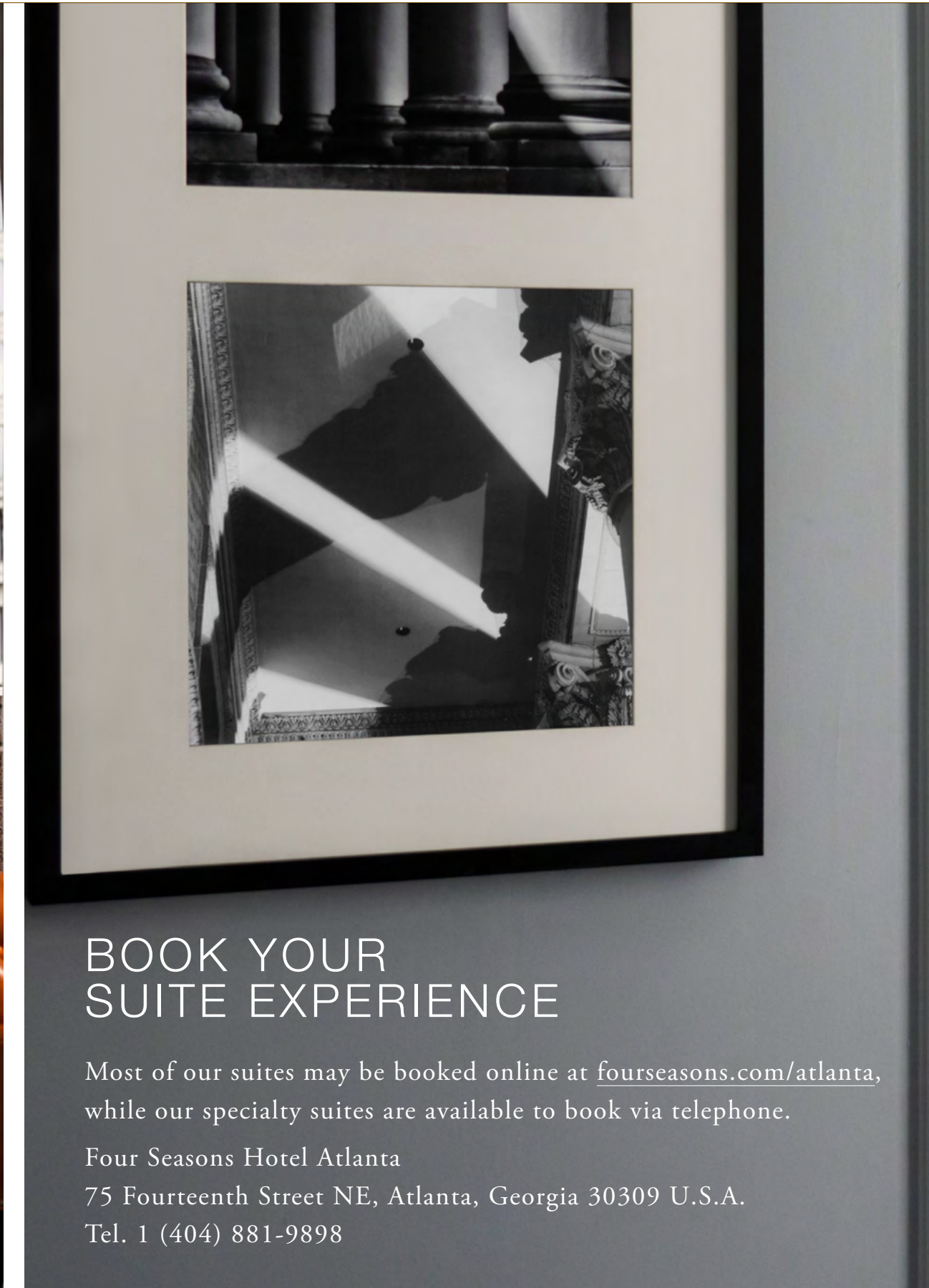
HOTEL OVERVIEW

SUITES

AMENITIES

MAP

CONTACT US



BOOK YOUR SUITE EXPERIENCE

Most of our suites may be booked online at fourseasons.com/atlanta, while our specialty suites are available to book via telephone.

Four Seasons Hotel Atlanta
75 Fourteenth Street NE, Atlanta, Georgia 30309 U.S.A.
Tel. 1 (404) 881-9898



[@FSAtlanta](#) / [@BarMargotATL](#)